

## Sutherland Avenue, W9

### £575,000

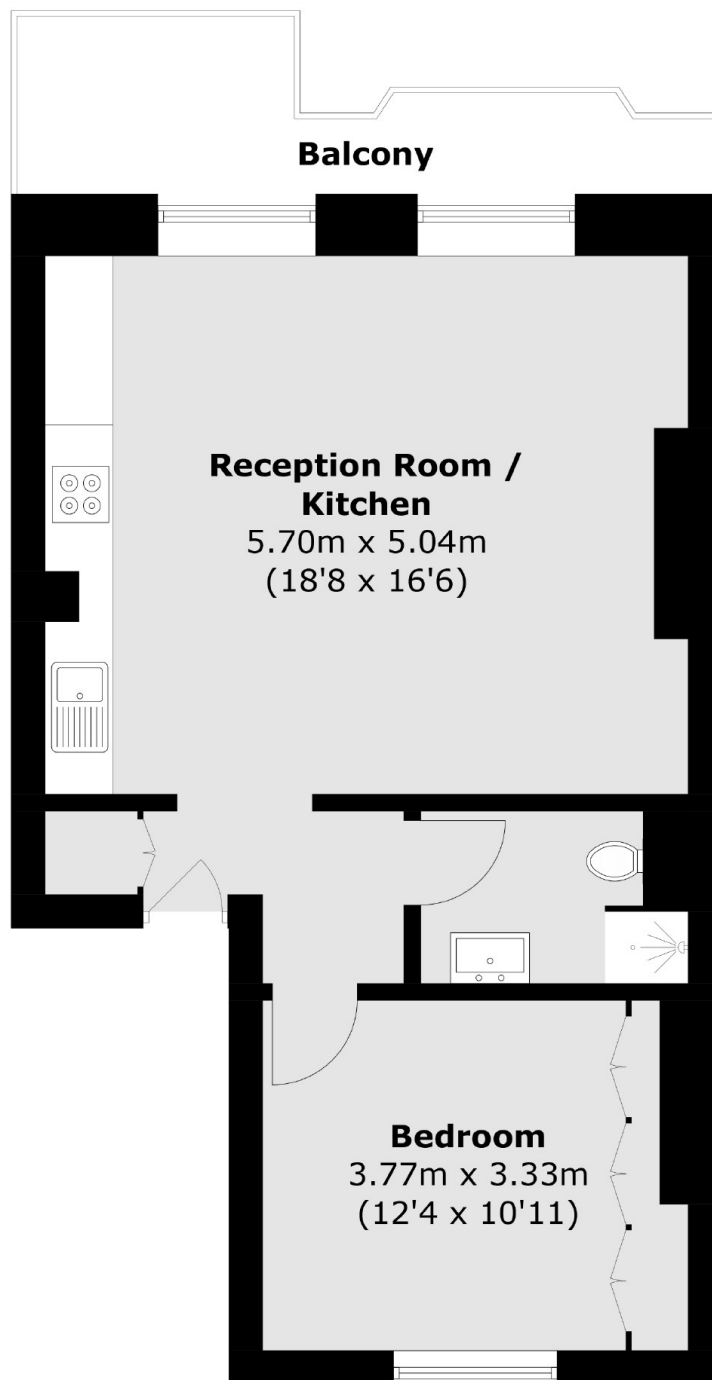
A first floor flat in turnkey condition set in a period conversion. This property offers a double bedroom with built-in wardrobes, open plan kitchen/reception, a private balcony and large sash windows which allow for plenty of sunlight. The property is being offered with a share of freehold, long lease and chain free.

Sutherland Avenue is picturesque street located within walking distance of Warwick Avenue underground station (Bakerloo line) and Westbourne Park underground station (Circle and Hammersmith & City lines), as well as The Hero pub and the Canal.

### Features

- First Floor Flat
- Double Bedroom
- Open Plan Kitchen/Reception
- Turnkey Condition
- Private Balcony
- Great Location

# Sutherland Avenue, Maida Vale, W9



Total Internal area (approx.): 47.7 sq. m (513.4 sq. ft)  
Balcony area : 6.9 sq. m (74.2 sq. ft)