



Hormead Road, W9

£580,000

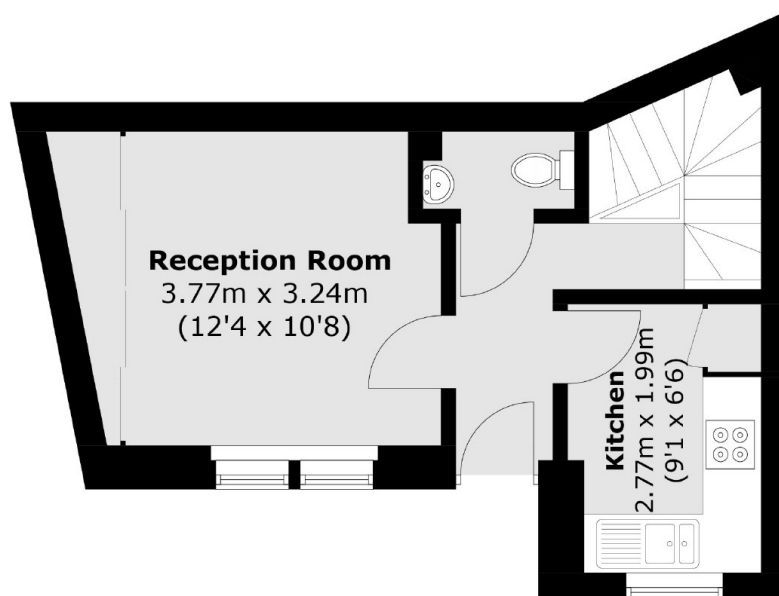
A two storey, freehold house featuring two double bedrooms with built-in wardrobes, separate kitchen and sash windows throughout. The property is being offered chain free.

Hormead Road is a quiet and pleasant no-through road, and is closely located to Westbourne Park underground station (Hammersmith & City and Circle lines) and a multitude of bus routes. Portobello Road and Westbourne Grove are located within walking distance, with their numerous shops, markets, bars, pubs and restaurants.

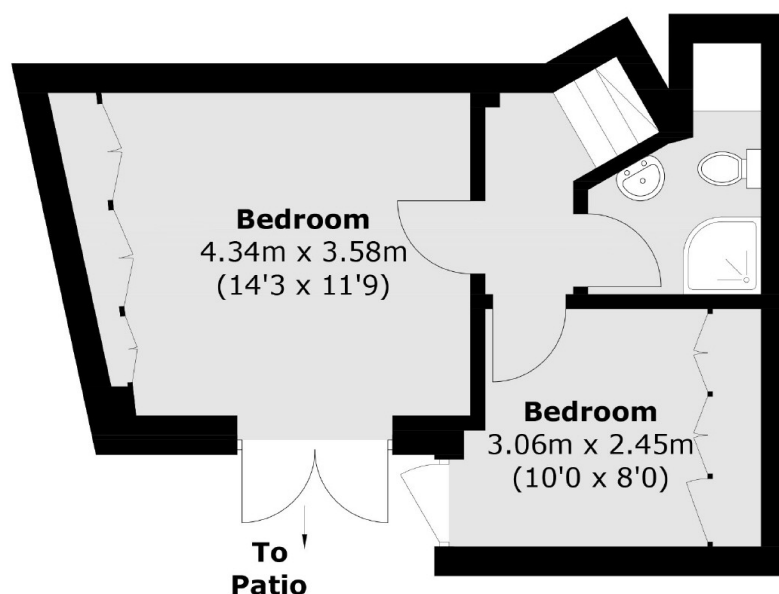
Features

- Post-War House
- Two Double Bedrooms
- Separate Kitchen
- Private Patio
- Chain Free
- Good Location

Hormead Road, Maida Vale, W9



Raised Ground Floor



Lower Ground Floor

Total area (approx.): 54.6 sq. m (587.7 sq. ft)