



Randolph Gardens, NW6

£542 Per week

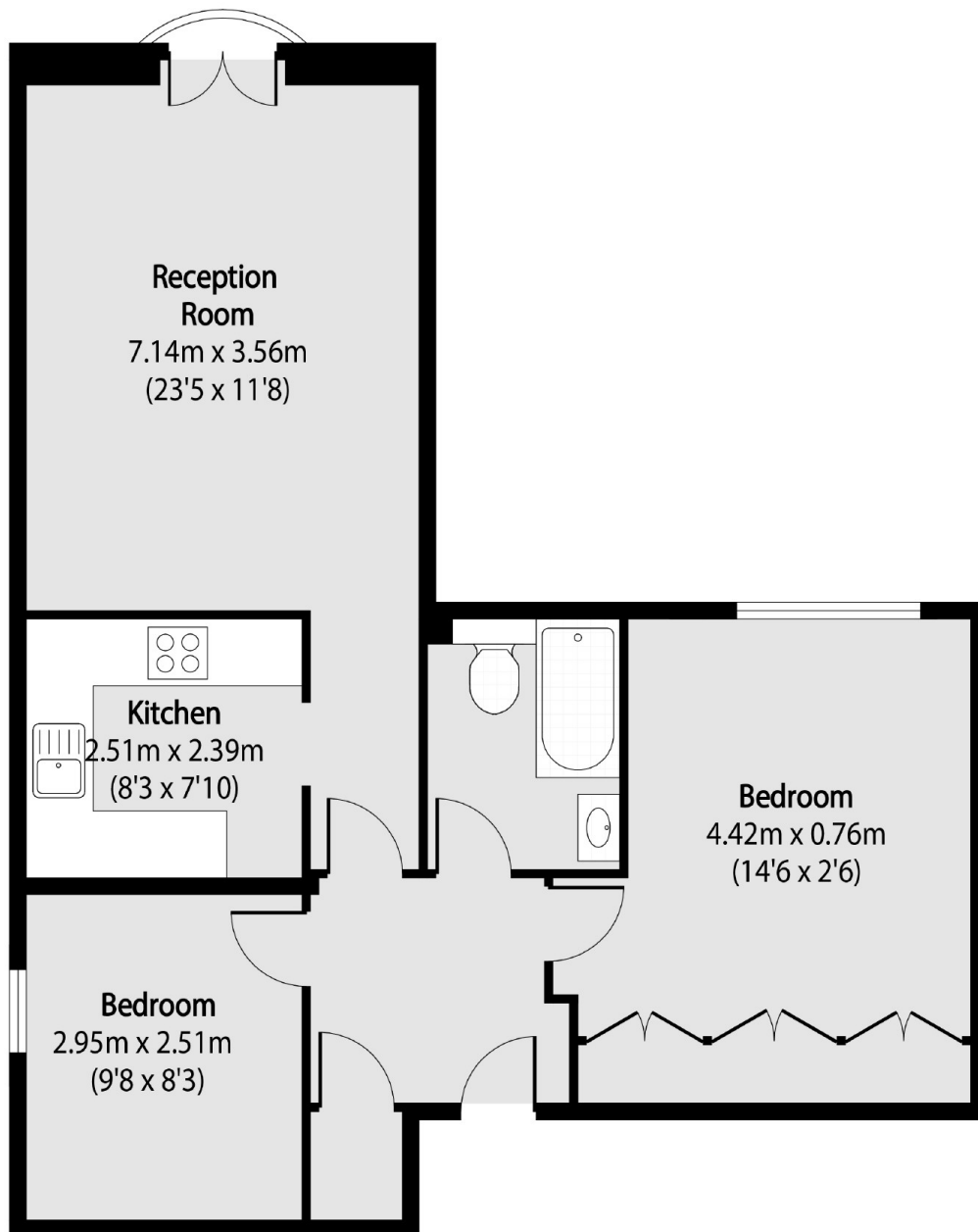
Spacious two bedroom flat with a large reception room and Juliet balcony. Set within a purpose built block, there is a separate kitchen with dishwasher and a primary bedroom with a full wall of storage and a large family bathroom.

Randolph Gardens is located a short walk from Maida Vale Station giving you quick access to the City and Central London on the Bakerloo Line.

Features

- Two Bedroom
- Large Reception Room
- Juliet Balcony
- Large Family Bathroom
- Parking
- Maida Vale Station

Randolph Gardens, London, NW6



Total area (approx): 59.46 sq m (640 sq. ft)