

## Grantully Road, W9

### £1,050,000

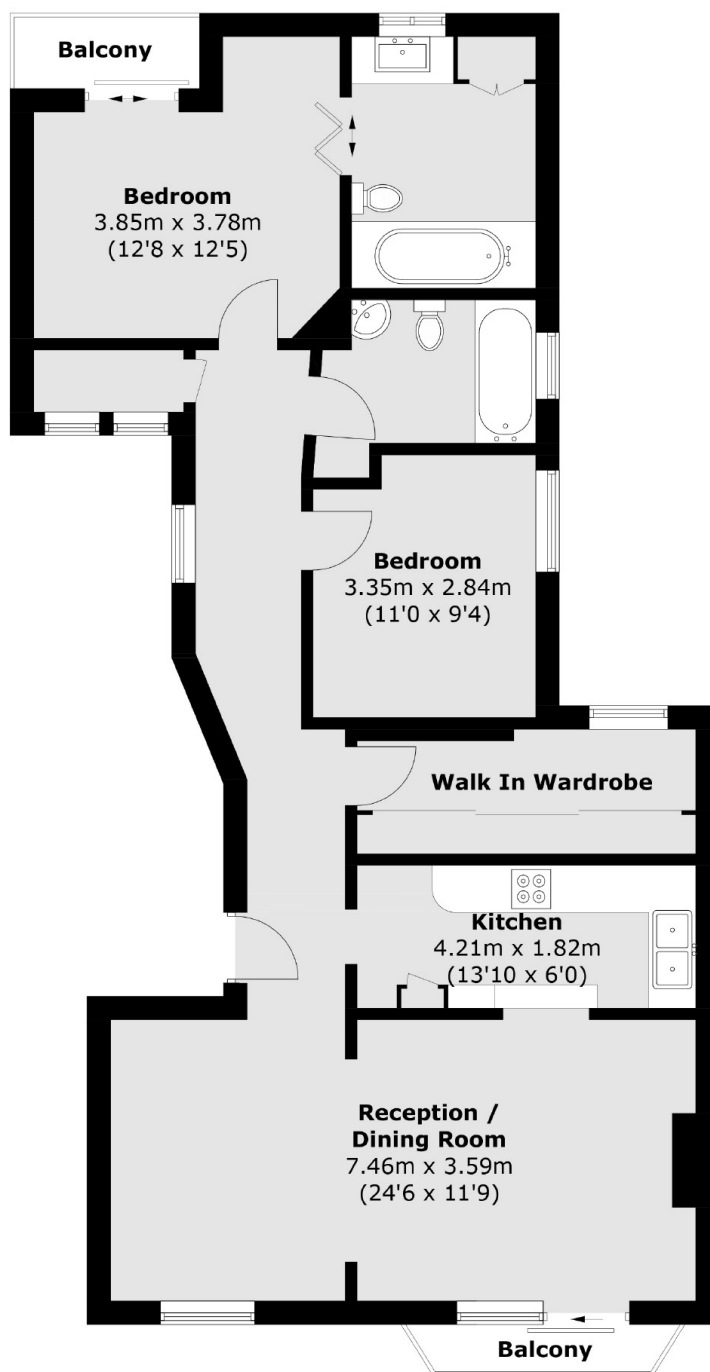
A top floor flat located in one of Maida Vale's iconic red-brick mansions. The property features a reception room which leads to one of two balconies, a kitchen with a breakfast bar, and two double bedrooms, including one with an en suite and access to the second balcony.

Grantully Road is a quiet and tree-lined one way road, located opposite Paddington Recreation Ground. Less than a third of a mile away is Maida Vale Station and all the shops, cafés and amenities on Elgin Avenue.

### Features

- Two Double Bedrooms
- Top Floor Flat
- Two Balconies
- Walk-In Closet
- Wooden Flooring Throughout
- Long Lease

# Grantully Road, Maida Vale, W9



Total area (approx.): 94.3 sq. m (1,015.0 sq. ft)  
Balconies: 4.0 sq. m (43.0 sq. ft)

## Dexters

Maida Vale  
298 Elgin Avenue  
London  
W9 1JS  
Sales  
020 7266 2020

Energy Rating: D. We aim to make our particulars both accurate and reliable. However they are not guaranteed; nor do they form part of an offer or contract. If you require clarification on any points then please contact us, especially if you're traveling some distance to view. Please note that appliances and heating systems have not been tested and therefore no warranties can be given as to their good working order.

 **RICS** | Regulated  
Estate Agent  
and Letting Agent

dexters.co.uk