



## Maida Vale, W9

£300,000

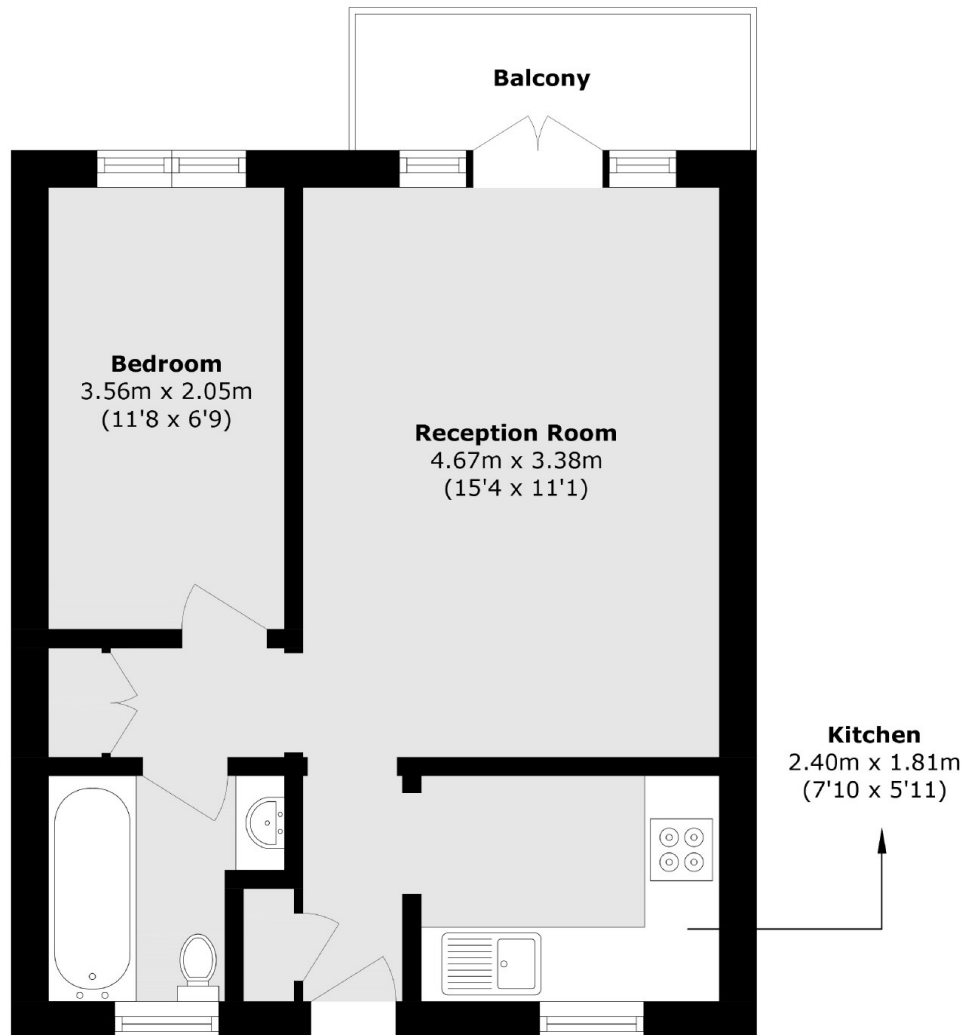
A fourth floor flat set in a purpose-built block. This property offers one double bedroom, a separate kitchen and balcony, as well as access to a lift and porter.

Wellesley Court is on the cusp of Maida Vale and St. John's Wood and less than 600 ft from multiple transport links and local amenities, providing fantastic access to the surrounding areas and into central London.

### Features

- Fourth Floor
- One Bedroom
- Separate Kitchen
- Porter & Lift
- Chain Free
- Great Transport Links

# Maida Vale, Maida Vale, W9



Total area (approx.): 35.4 sq. m (381 sq. ft)

Balcony area (approx.): 3.7 sq. m (39.8 sq. ft)