

Elgin Avenue, W9

£435,000

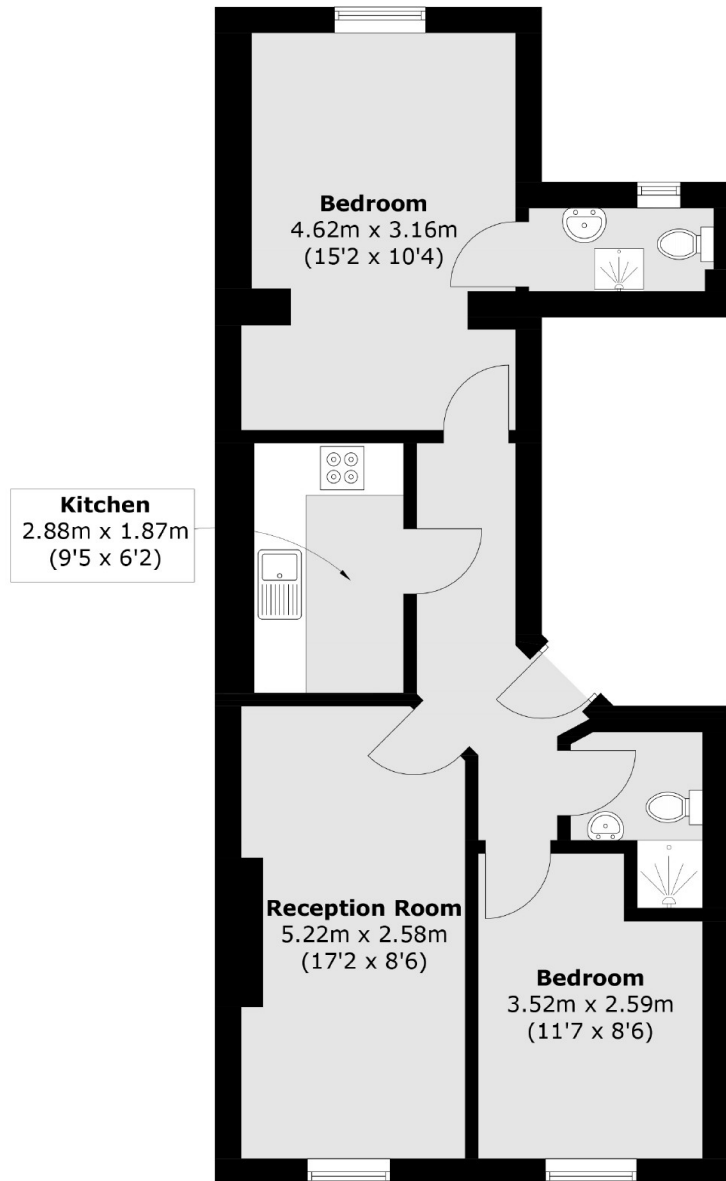
A first floor flat set in a period conversion. This property features two double bedrooms, one of which comes with an en suite, a separate kitchen and wooden flooring throughout.

Directly across from Maida Vale tube station, this location offers easy access to the extensive amenities of Maida Vale and nearby areas, including the lush green spaces of Paddington Recreational Ground.

Features

- Two Bedrooms
- Separate Kitchen
- First Floor Flat
- Wooden Flooring Throughout
- Great Transport Links
- Chain Free

Elgin Avenue, Maida Vale, W9



First Floor

Total area (approx.): 54.4 sq. m (585.5 sq. ft)