



Shirland Road, W9

£761 Per week

Extremely spacious split level two bedroom maisonette, arranged over two floors, with own entrance, large reception rooms, two large sized double bedrooms (or two doubles and two receptions) and a newly renovated large bathroom, with separate WC. Victorian features throughout - with cast iron fireplaces and large windows offering an abundance of natural light.

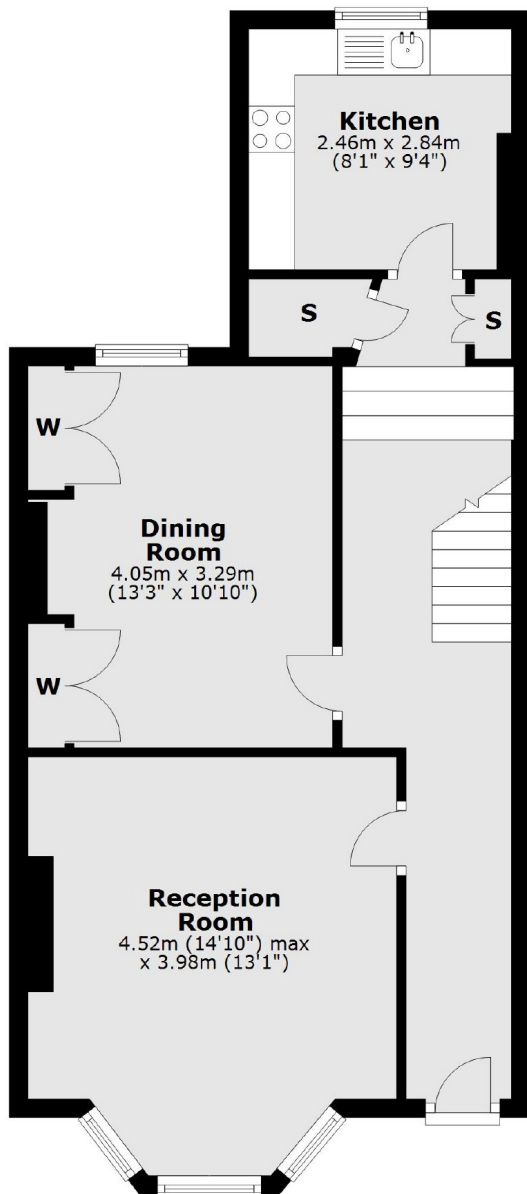
Shirland Road offers easy access to the amenities of Maida Vale, Queens Park and Westbourne Park and is within easy reach of a number of local shops, cafes. Shirland Road offers is close to transport hubs including Maida Vale, Westbourne Grove and Queens Park tube stations as well as range of local shops, cafes and amenities.

Features

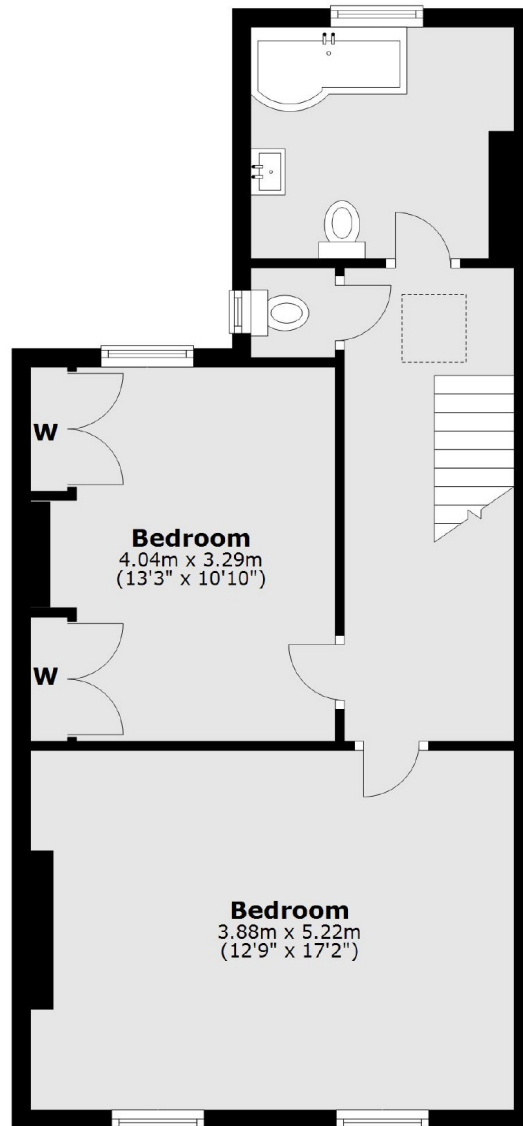
Split Level Maisonette
Two / Three Bedrooms
Separate Kitchen
Large Reception
Great Location
Taken As Seen

Shirland Road, Maida Vale, W9

Ground Floor



First Floor



Total area: approx. 105.6 sq. metres (1136.3 sq. feet)