



Kilburn Park Road, NW6

£789,000

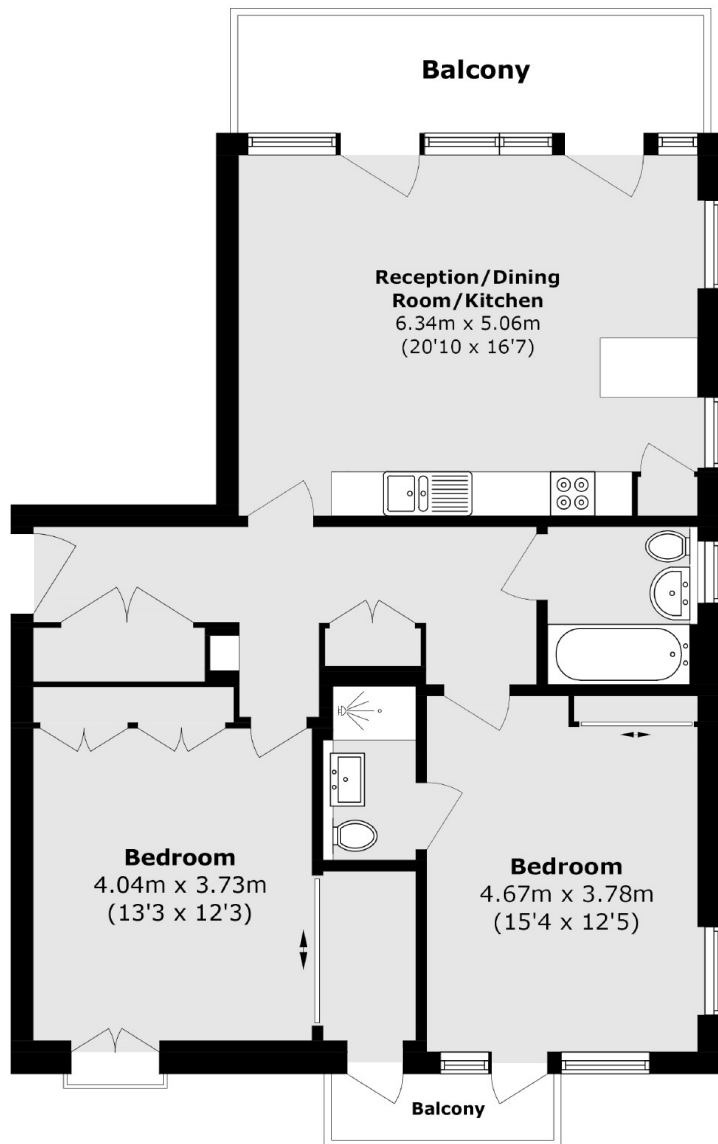
A third floor flat set in a modern purpose-built block. This property offers an open plan kitchen/reception with doors leading out to one of the two balconies, two double bedrooms with access to the second balcony and underfloor heating. The main bedroom features an en suite and the second bedroom boasts built-in wardrobes, providing plenty of storage.

Perfectly situated near to Paddington Recreation Ground, this location offers the serene ambiance of Maida Vale and Little Venice, along with the vibrant energy of Kilburn Park and Queens Park.

Features

- Purpose-Built Block
- Two Double Bedrooms
- Two Bathrooms
- Two Balconies
- Parking
- Underfloor Heating

Kilburn Park Road, London, NW6



Total area (approx.): 96.6 sq. m (1039.8 sq. ft)
Balcony area (approx.): 12.8 sq. m (137.7 sq. ft)

Dexters

Maida Vale
298 Elgin Avenue
London
W9 1JS
Sales
020 7266 2020

Energy Rating: B. We aim to make our particulars both accurate and reliable. However they are not guaranteed; nor do they form part of an offer or contract. If you require clarification on any points then please contact us, especially if you're traveling some distance to view. Please note that appliances and heating systems have not been tested and therefore no warranties can be given as to their good working order.

 **RICS** | Regulated
Estate Agent
and Letting Agent

[dexters.co.uk](https://www.dexters.co.uk)