



Clifton Gardens, W9

£760,000

A second floor flat in a period conversion. This property features two double bedrooms, one of which has an en suite, an additional bathroom, a separate kitchen, wooden flooring throughout and sash windows.

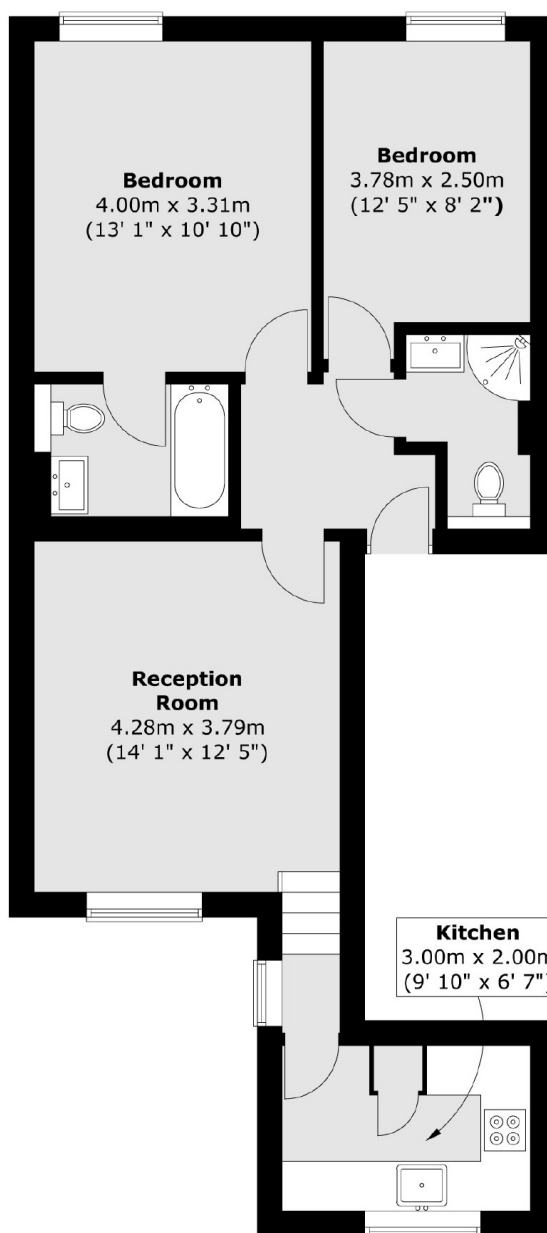
Clifton Gardens is a tree-lined picturesque street, situated within close proximity of Warwick Avenue underground station (Bakerloo line), the canal in Little Venice and all other local amenities.

Features

- Period Conversion
- Second Floor Flat
- Two Double Bedrooms
- Two Bathrooms
- Chain Free
- Great Location

Clifton Gardens, Maida Vale, W9

Second Floor



Total area (approx.) : 59.1 sq. m (636 sq. ft)