



Ashmore Road, W9

£1,595,000

A linked semi-detached property set on a tree-lined residential road in Maida Vale. This property, spread across three floors and offering over 2,000 sq ft of space, has been recently renovated and is ready to move-in.

Ashmore Road offers excellent access to Queen's Park and Westbourne Park, with numerous transport links to Central London. It is also within a mile of Little Venice, Portobello, and Paddington Recreation Ground.

Features

- Four Double Bedrooms
- Separate Kitchen/Dining Room
- Private Garden
- Chain Free
- Private Terrace
- Great Location



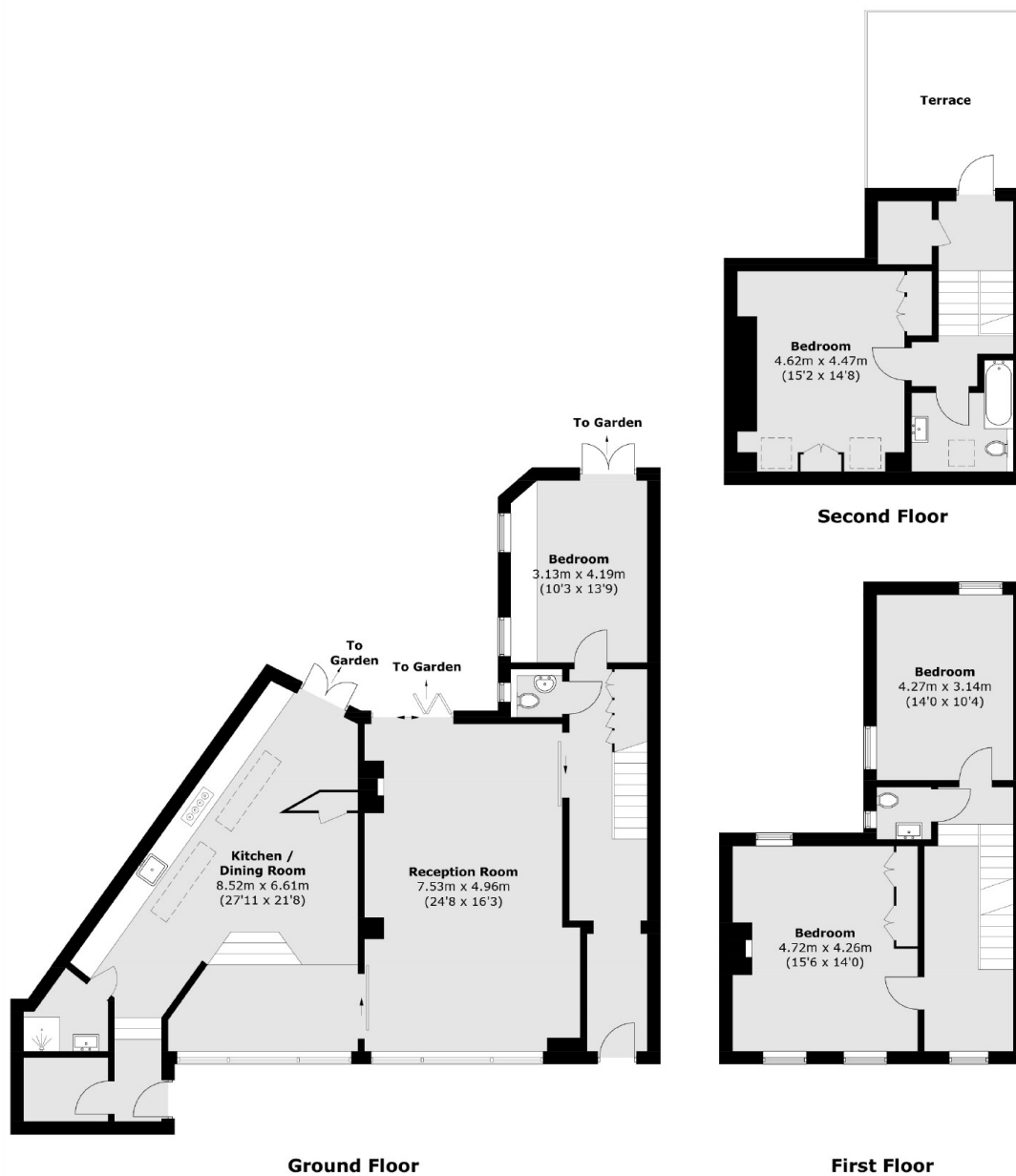
Ashmore Road, W9

Walking in through the entrance, there is the large reception room offering a perfect space to host family and friends. Large doors open out to the garden, which along with the large windows on the other side of the room, allow plenty of sunlight into the space. The pocket door leads to the kitchen/dining area, as well as a storage room and shower room. The kitchen and bedroom on the ground floor both have a door leading to the garden as well.

On the first floor, there are two additional double bedrooms and a WC. On the second floor, there is another bedroom with built-in storage, a full bathroom and a terrace, which provides a perfect outer space to relax above the garden.



Ashmore Road, Maida Vale, W9



Total area (approx.): 198.3 sq. m (2,134.5 sq. ft)
Terrace: 14.6 sq. m (157.1 sq. ft)

Dexters

Maida Vale
298 Elgin Avenue
London
W9 1JS
Sales
020 7266 2020

Energy Rating: E. We aim to make our particulars both accurate and reliable. However they are not guaranteed; nor do they form part of an offer or contract. If you require clarification on any points then please contact us, especially if you're traveling some distance to view. Please note that appliances and heating systems have not been tested and therefore no warranties can be given as to their good working order.

RICS Regulated
Estate Agent
and Letting Agent

dexters.co.uk