

## Elgin Avenue, W9

### £840,000

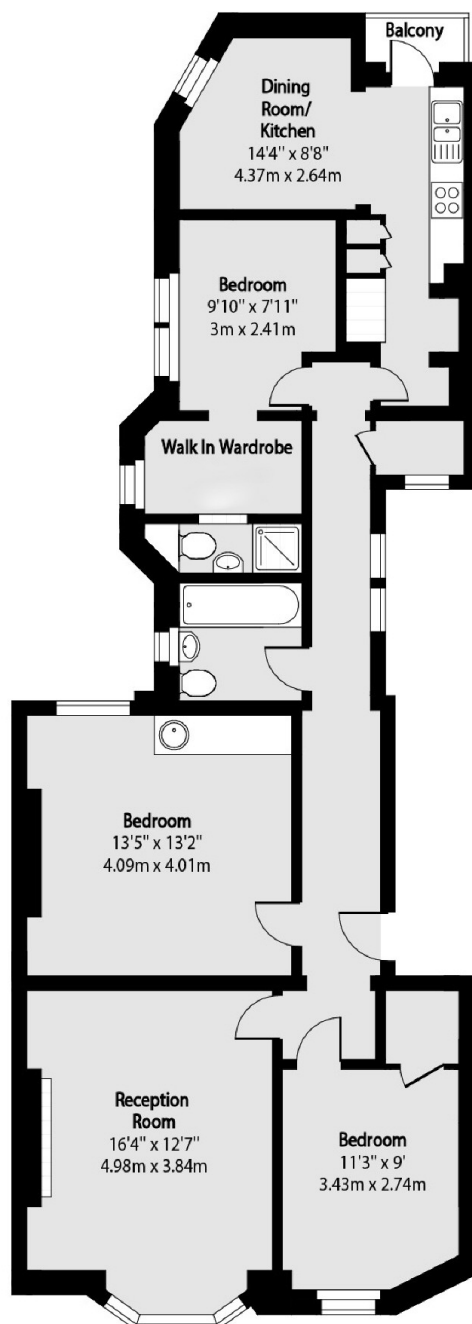
Situated on the third floor of a stunning mansion block, this property offers three double bedrooms (one en suite), a separate kitchen/dining room area, a large reception area with a bay window and a private balcony.

Ideally situated on Elgin Avenue, providing easy access to local shops, cafés and transport links, as well as Paddington Recreational Ground and Little Venice. The closest tube station is Maida Vale (Bakerloo line).

### Features

- Mansion Block
- Three Double Bedrooms
- Separate Kitchen
- Good Location
- Great Transport Links
- Private Balcony

# Elgin Avenue, Maida Vale, W9



Total area (approx): 94.76 sq m (1020 sq. ft)

Balcony total area (approx): 1.20 sq m (13 sq. ft)

## Dexters

Maida Vale  
298 Elgin Avenue  
London  
W9 1JS  
Sales  
020 7266 2020

Energy Rating: E. We aim to make our particulars both accurate and reliable. However they are not guaranteed; nor do they form part of an offer or contract. If you require clarification on any points then please contact us, especially if you're traveling some distance to view. Please note that appliances and heating systems have not been tested and therefore no warranties can be given as to their good working order.

 **RICS** | Regulated  
Estate Agent  
and Letting Agent

[dexters.co.uk](https://www.dexters.co.uk)