



Portnall Road, W9

£550,000

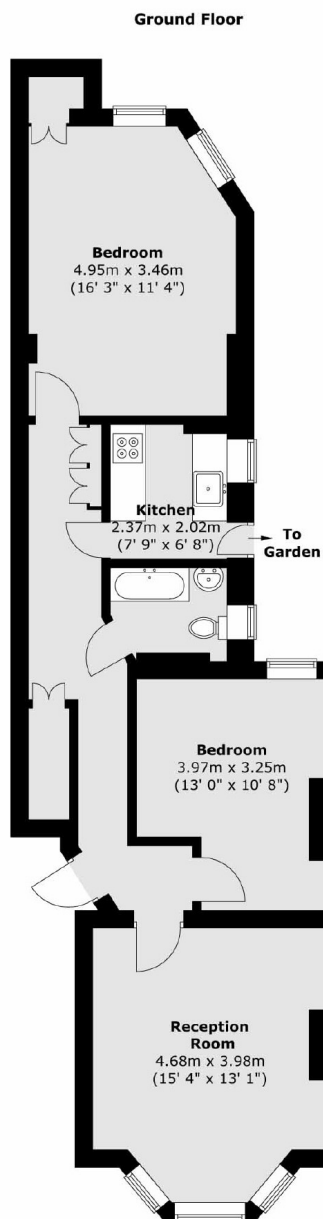
A ground floor flat in a Victorian conversion. This property offers two double bedrooms, one of which features built-in wardrobes, a separate kitchen, a reception room with bay windows, wooden flooring throughout and access to a garden.

Portnall Road offers great access to both Harrow Road and Queens Park, which host a number of shops, transport links and cafés whilst also being within walking distance of Maida Vale, Paddington Recreational Ground and Warwick Avenue.

Features

- Two Double Bedrooms
- Separate Kitchen
- Garden
- Wooden Flooring Throughout
- Victorian Conversion
- Great Location

Portnall Road, Maida Vale, W9



Total area (approx.) : 69.6 sq. m (749 sq. ft)

Dexters

Maida Vale
298 Elgin Avenue
London
W9 1JS
Sales
020 7266 2020

Energy Rating: D. We aim to make our particulars both accurate and reliable. However they are not guaranteed; nor do they form part of an offer or contract. If you require clarification on any points then please contact us, especially if you're traveling some distance to view. Please note that appliances and heating systems have not been tested and therefore no warranties can be given as to their good working order.

 **RICS** | Regulated
Estate Agent
and Letting Agent

[dexters.co.uk](https://www.dexters.co.uk)