



Shirland Road, W9

£1,399,950

A split-level flat in a modern development in turnkey condition. It comes complete with three double bedrooms with built-in wardrobes, a spacious open plan kitchen/reception area, three bathrooms and wooden flooring throughout. This apartment is being offered with a long lease.

Shirland Road is ideally located for both Maida Vale and Warwick Avenue underground stations, the open spaces of Paddington Recreational Grounds and a number of independent shops and cafés that run along Elgin Avenue.

Features

- Split-Level Flat
- Modern Development
- Private Patio
- Private Entrance
- Open Plan Kitchen
- Allocated Off Street Parking



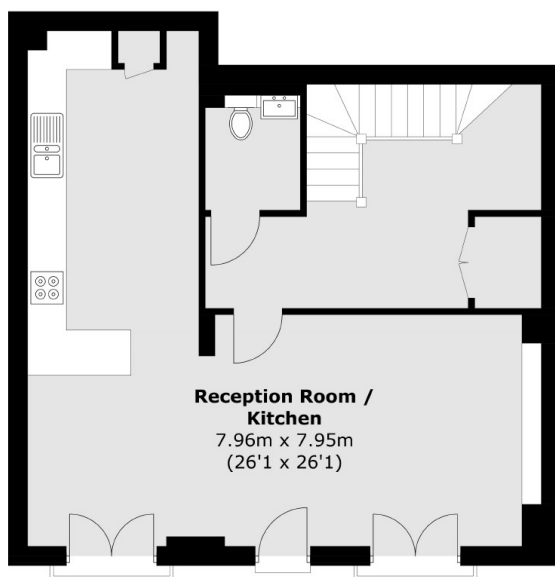
Shirland Road, W9

This apartment is divided over two floors. Walking in through the entrance on the ground floor, there is a large reception area that leads to the modern, fully equipped kitchen, providing a perfect hosting space for family and friends. On this floor, there is a guest WC.

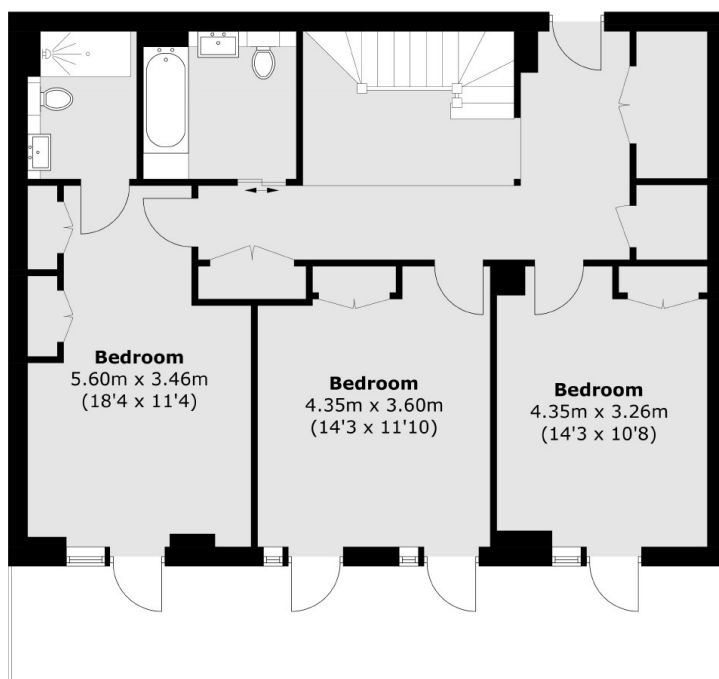
Going down the stairs to the lower ground floor, there are three double bedrooms, all of which have built-in wardrobes and doors leading out to the patio. There is also plenty of storage on both sides of the corridor, maximising all the space available.



Shirland Road, Maida Vale, W9



Ground Floor



Lower Ground Floor

Total area (approx.): 143 sq. m (1,539.1 sq. ft)