



Lauderdale Road, W9

£1,795,000

A two double bedroom split-level apartment on the third floor of a scenic red-brick mansion block on Lauderdale Road. This property is being offered in turnkey condition, with an open plan kitchen/reception, a main en suite bedroom with a walk-in wardrobe, an additional reception and bathroom, and a well-kept private terrace.

Lauderdale Road offers easy access to both Maida Vale and Warwick Avenue underground stations, the amenities available along Elgin Avenue, the canal in Little Venice and the shops of Clifton Gardens. The property is also located close to Paddington Recreational Ground and The Hero pub.

Features

- Two Double Bedrooms
- Two Receptions
- Open Plan Kitchen
- Private Terrace
- Mansion Block
- Fantastic Location



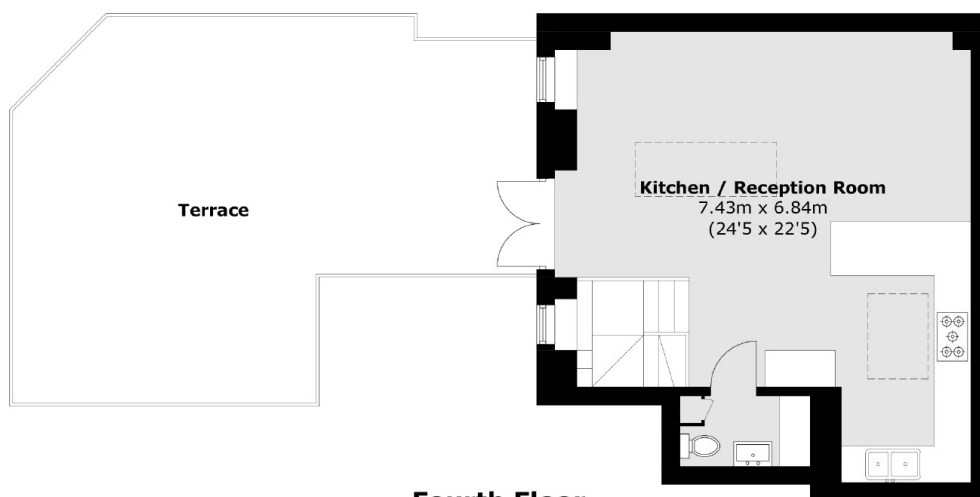
Lauderdale Road, W9

Walking into this modern apartment on the third floor, there is a spacious reception with space for a study space. Next to it, is one of the two double bedrooms which features a built-in wardrobe. Down the corridor is one of the two bathrooms, and then the spacious main bedroom with full en suite and a walk-in wardrobe.

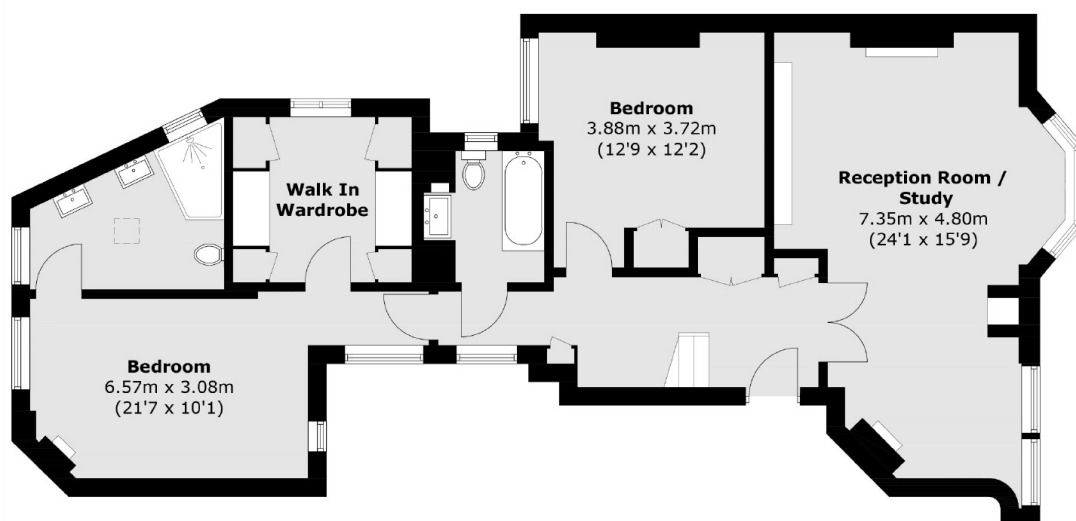
On the upper floor, there is a large, wooden floored open plan kitchen/reception room which leads out to the terrace, perfect for hosting and to spend leisurely time.



Lauderdale Road, Maida Vale, W9



Fourth Floor



Third Floor

Total area (approx.): 136.5 sq. m (1,469.3 sq. ft)
Terrace : 45.2 sq. m (486.5 sq. ft)