

## Fernhead Road, W9

### £650,000

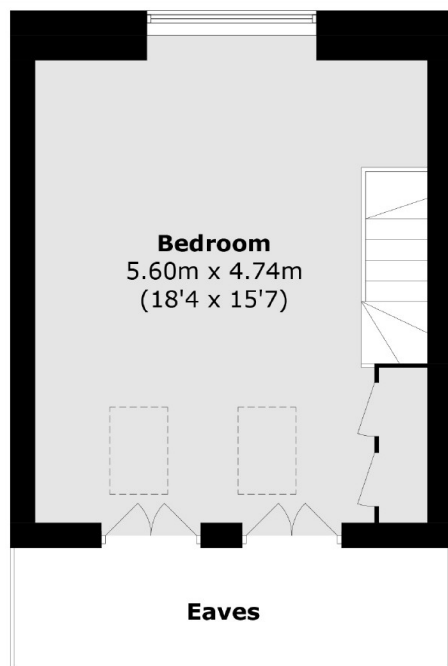
A split-level, two double bedroom apartment in a Victorian conversion. The property features two double bedrooms with built-in storage, an open plan reception/kitchen, one bathroom, an additional WC and large sash windows.

Fernhead Road offers excellent access to Queen's Park and Westbourne Park, with numerous transport links to Central London. It's conveniently located within a mile of popular destinations, such as Little Venice, Portobello, and Paddington Recreation Ground.

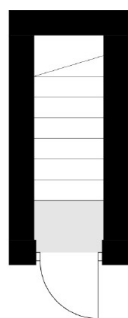
### Features

- Two Double Bedrooms
- Open Plan Reception/Kitchen
- Additional WC
- Split Level
- Victorian Conversion
- Great Location

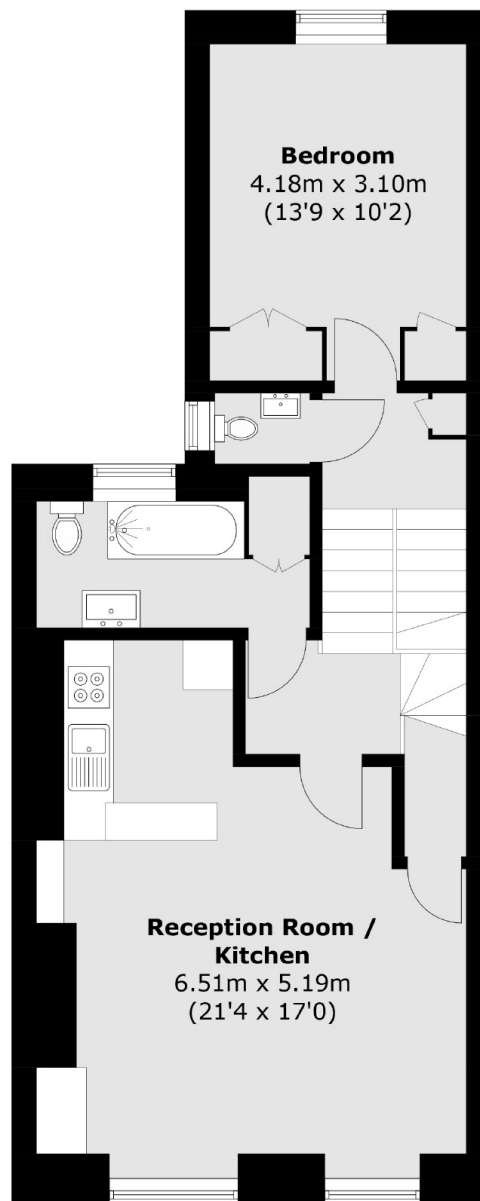
# Fernhead Road, Maida Vale, W9



**Third Floor**



**First Floor**



**Second Floor**

Total area (approx.): 90.8 sq. m (977.4 sq. ft)  
(Excluding Eaves)