



Sutherland Avenue, W9

£745,000

A four double bedroom, top floor flat in a Victorian conversion. The flat is set over three floors and comes complete with an open plan kitchen/reception, four bedrooms, two of which are en suite, an additional bathroom and a private terrace.

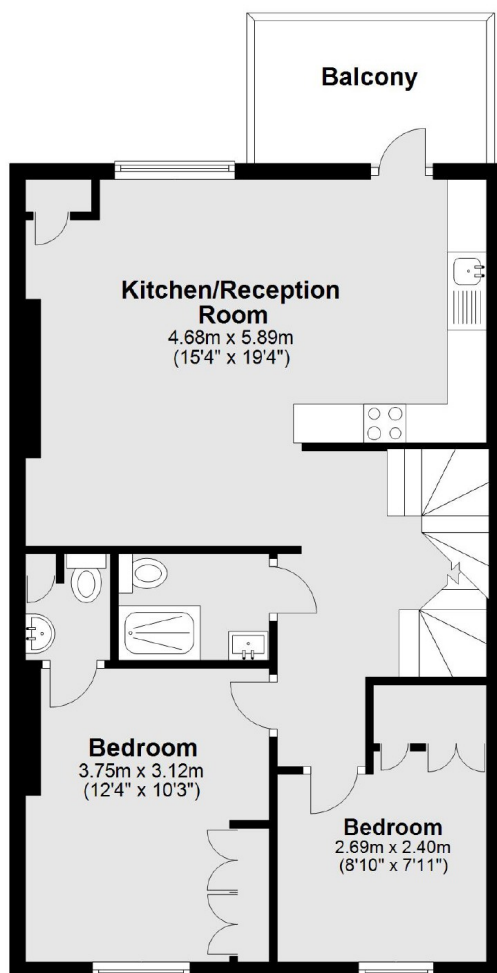
Sutherland Avenue is a desirable tree-lined street, moments from the cafés, restaurants and boutique shops on Clifton Road and Lauderdale Parade. Warwick Avenue and Maida Vale stations are both a short walk away, as is Paddington Recreation Ground.

Features

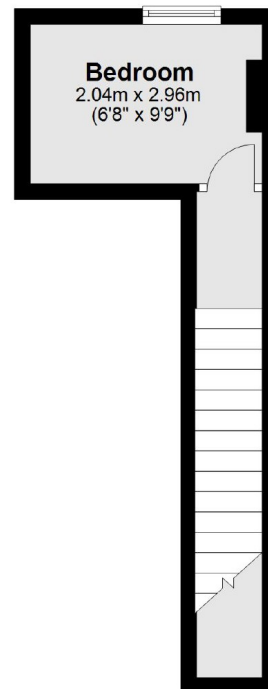
- Four Bedrooms
- Two Bathrooms
- Victorian Conversion
- Private Terrace
- Chain Free
- Prime Location

Sutherland Avenue, Maida Vale, W9

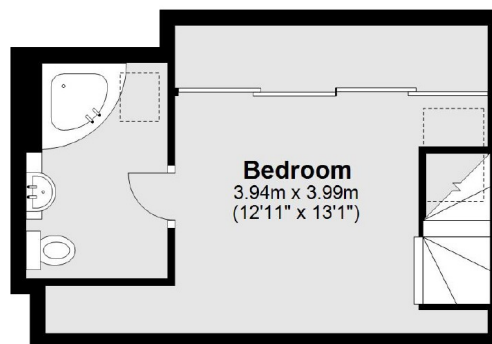
Third Floor



Second Floor



Fourth Floor



Total area: approx. 92.3 sq. metres (993.2 sq. feet)