



Fermoy Road, W9

£425,000

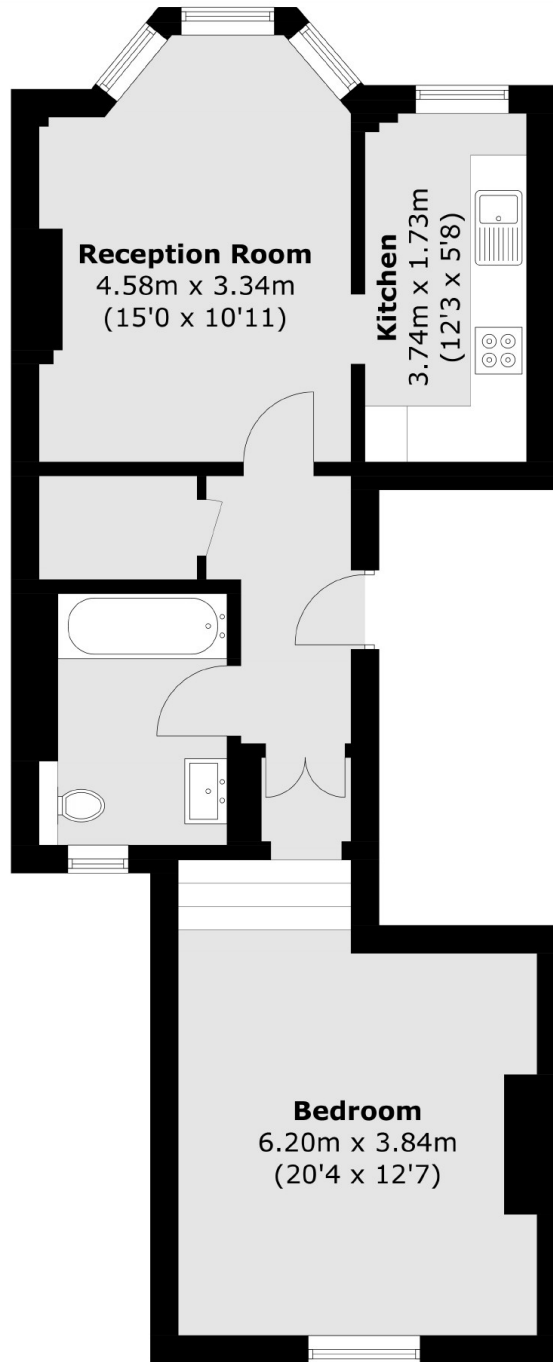
A one bedroom, first floor apartment set within a Victorian conversion. This beautiful home has high ceilings, a large bay window, a separate kitchen, ample storage.

Fermoy Road is less than half a mile from multiple transport links to central London. It is walking distance of all the local amenities of Maida Vale and Westbourne Grove, along with the sporting facilities of Paddington Recreational Ground.

Features

First Floor Flat
Separate Kitchen
One Bedroom
568 Square Feet
Chain Free
Leasehold

Fermoy Road, Maida Vale, W9



Total area (approx.): 52.8 sq. m (568.3 sq. ft)