



Shirland Road, W9

£550,000

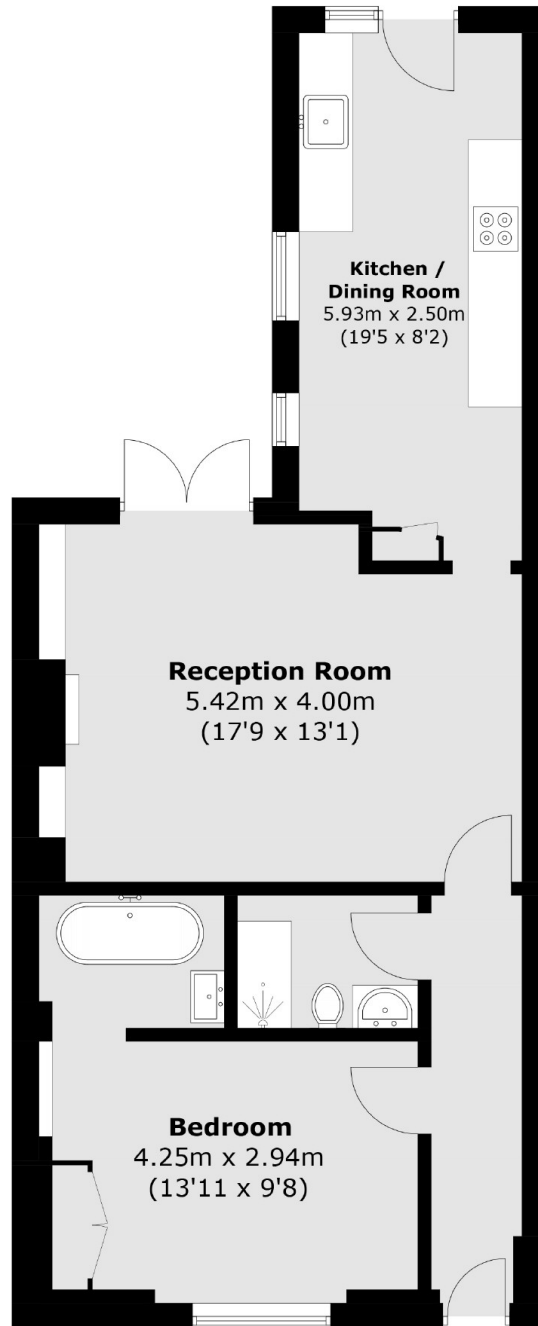
A one bedroom flat with a large reception room and private garden. The apartment is comprised of a double bedroom with built-in wardrobes and an en-suite shower room, separate kitchen, plenty of storage space and wooden flooring throughout.

Shirland Road is ideally located for both Maida Vale and Warwick Avenue underground stations, the open spaces of Paddington recreational grounds and a number of independent shops and cafes that run along Elgin Avenue

Features

- Potential to Extend STPP
- Large Private Garden
- Two Bathrooms
- Separate Kitchen
- Chain Free
- Great Transport Links

Shirland Road, Maida Vale, W9



Total area (approx.): 61.7 sq. m (664.1 sq. ft)