



## Fordingley Road, W9

£500,000

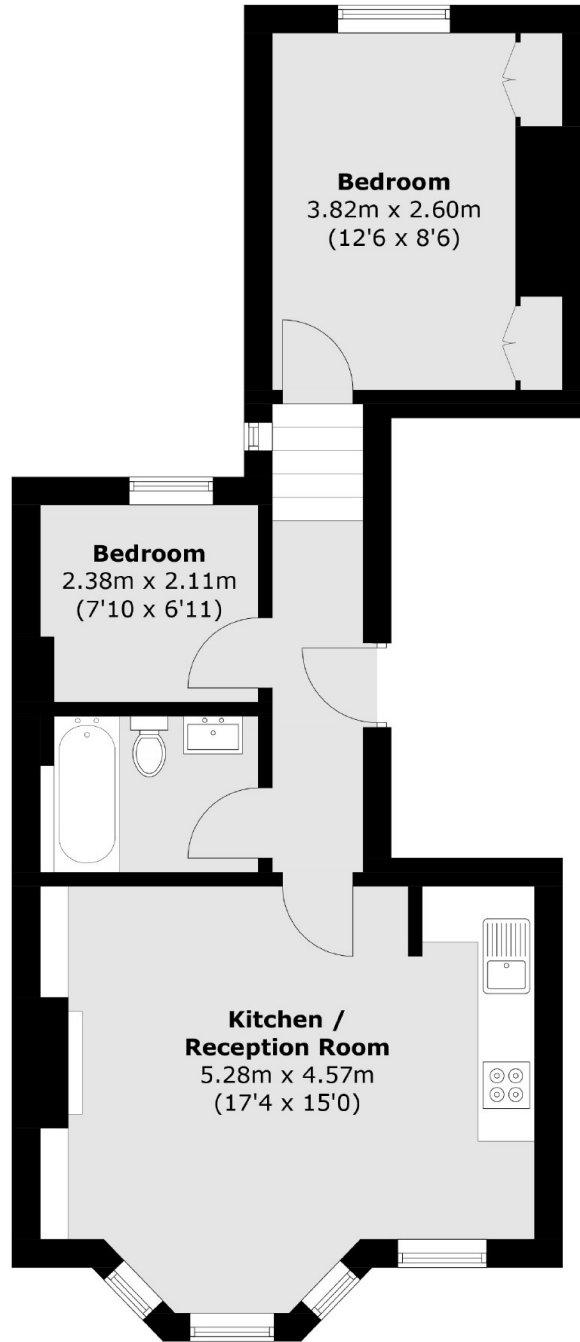
This first floor two bedroom flat comes complete with an open-plan kitchen, a main double bedroom with built in wardrobes, fully equipped kitchen and family bathroom. This apartment is offered with a long lease and a share of freehold.

Fordingley Road is ideally located a short walk from Queens Park and Maida Vale, providing convenient access to the local bars, cafes and shops along Salusbury Road and the Farmer's Market on a Sunday.

### Features

- Period Conversion
- Two Bedrooms
- Open-Plan Kitchen
- Long Lease
- Share of Freehold
- Great Location

# Fordingley Road, Maida Vale, W9



Total area (approx.): 48.8 sq. m (525.3 sq. ft)