

Warwick Avenue, W9

£2,495 Per week

Private entrance leading to an impressive reception hall with high ceilings and period features. On entry you are greeted by a double reception room with a fireplace set in both rooms. The property boasts large sash windows on either side allowing lots of light to enter the property and modern kitchen.

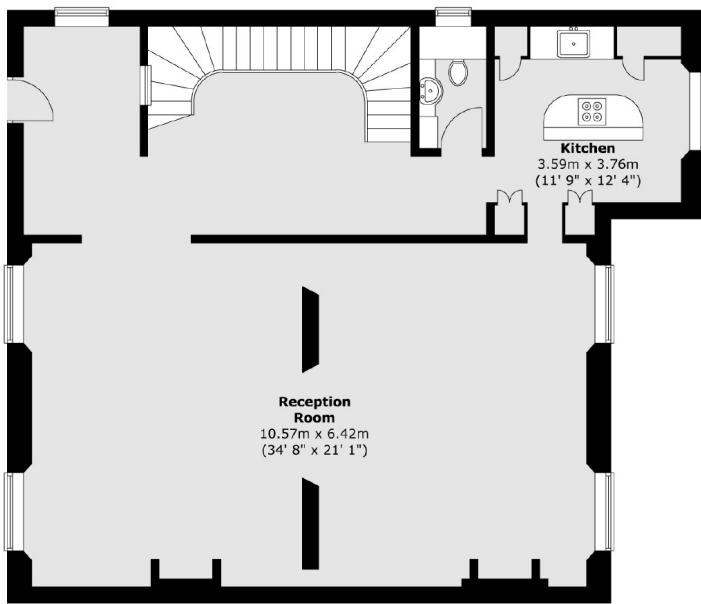
Well-located in all directions, Warwick Avenue tube station is on the doorstep with the shops and cafes of Clifton Road, Paddington station and Lord's cricket ground all within half a mile of the property.

Features

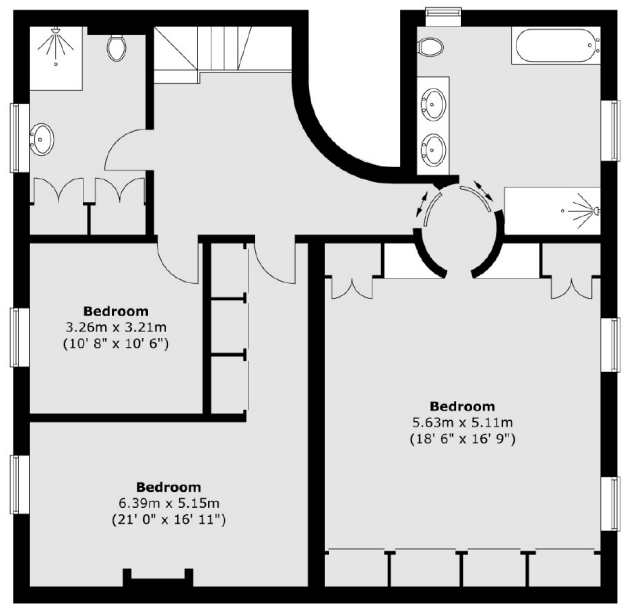
- Three Bedrooms
- Two Bathrooms
- Double Reception Room
- High Ceilings
- Tennis Court
- Communal Garden

Warwick Avenue, Maida Vale, W9

Ground Floor



First Floor



Total area (approx.) : 218.3 sq. m (2349 sq. ft)