



Maida Vale, W9

£385,000

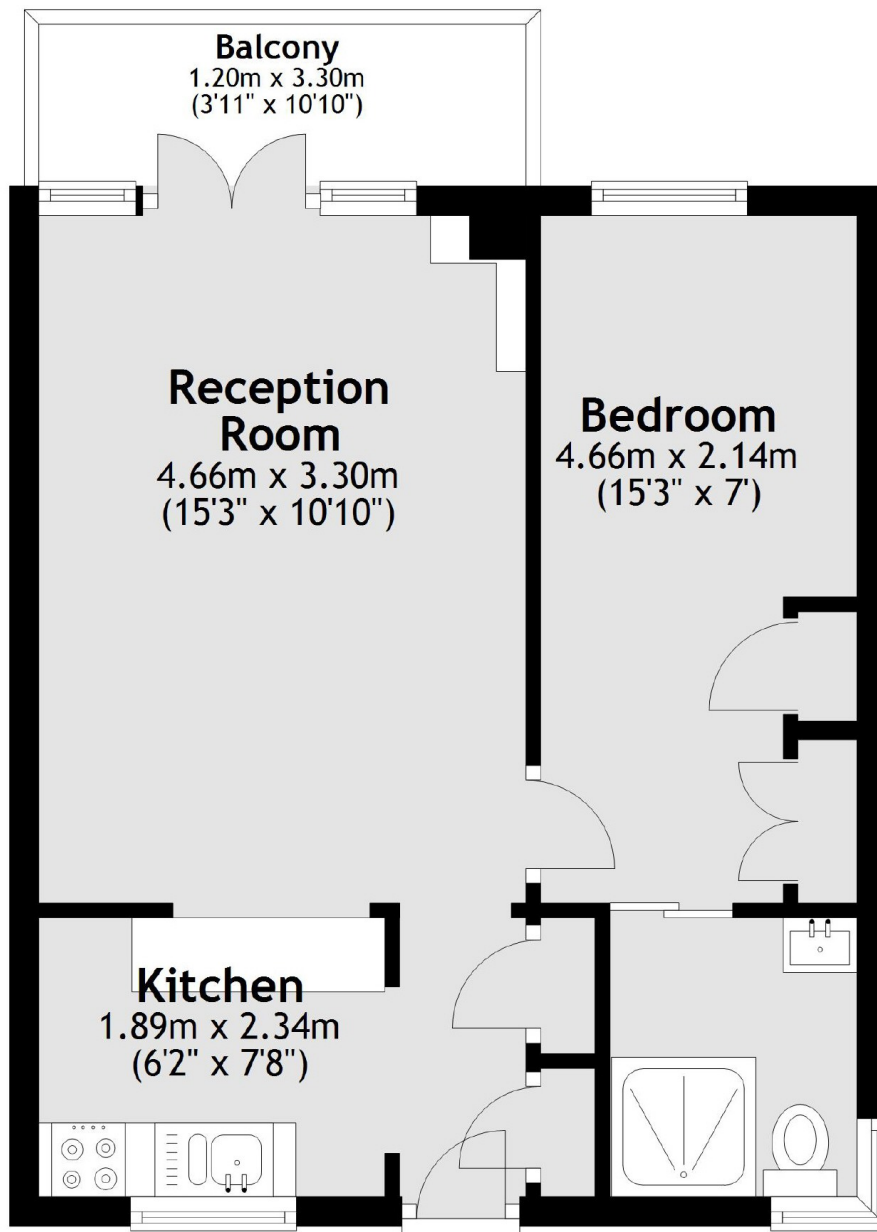
A one double bedroom first floor flat in a portered purpose built block with a lift and a southwest facing balcony. The property provides a semi-open plan kitchen/living space, is in excellent condition throughout and has access to communal gardens.

Wellesley Court is on the cusp of Maida Vale and St. John's Wood and less than 600 ft from multiple transport links and local amenities.

Features

- Chain Free
- Excellent Condition
- Private Balcony
- Portered Block With Lift
- Leasehold of 170 Years
- Access to Maida Vale Tube

Maida Vale, Maida Vale, W9



Total area: approx. 36.9 sq. metres (396.7 sq. feet)