



Lauderdale Road, W9

£1,100,000

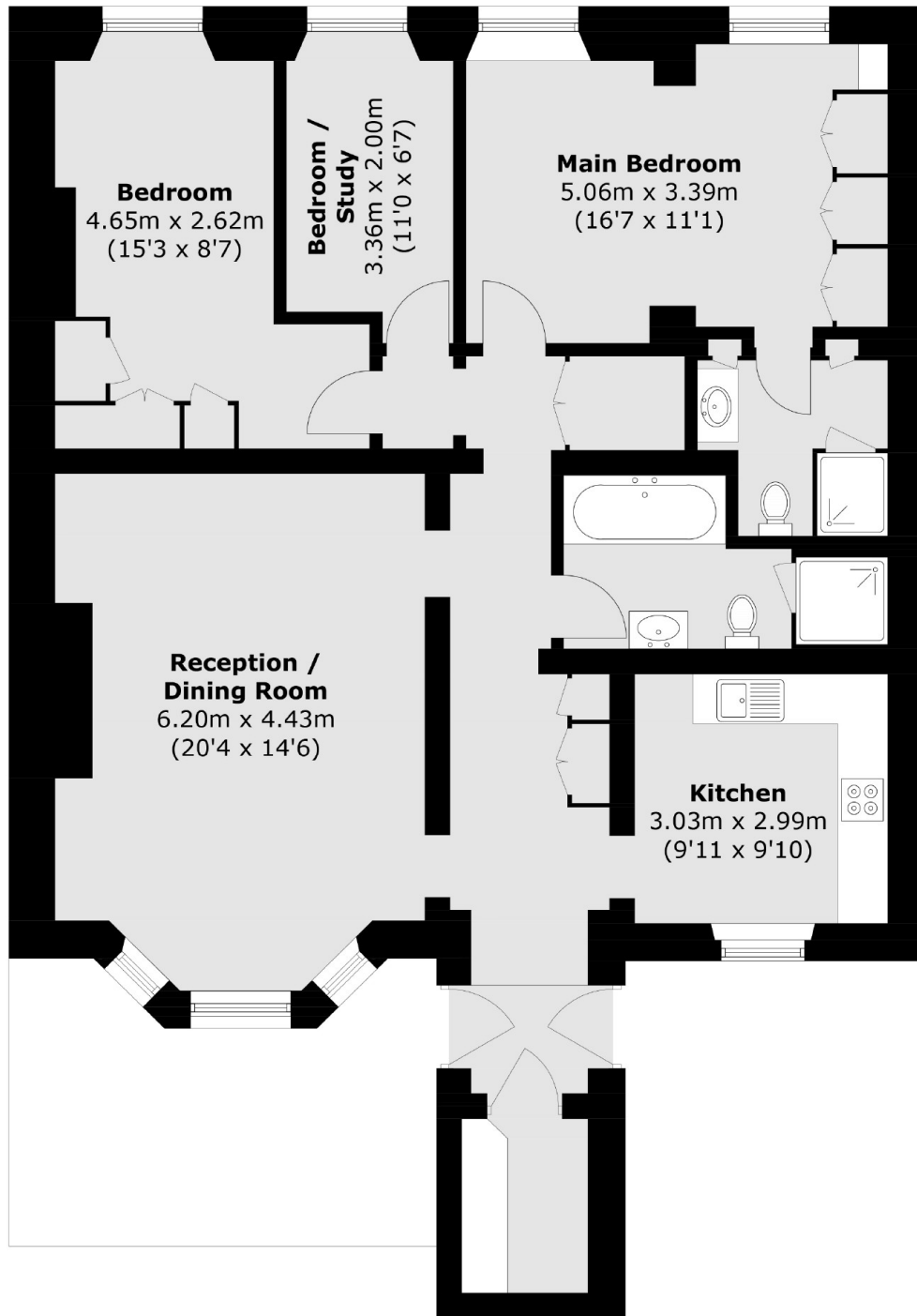
This is a three bedroom, two bathroom apartment with plenty of natural light and an abundance of storage. The property has spacious living room, separate kitchen, a large main bedroom with en suite and a family bathroom with a bathtub and shower cabin. This property also has access to a private outside space and is offered chain free.

Lauderdale Road is a quiet, one-way, tree lined street perfectly positioned moments from Lauderdale Parade, Paddington Recreation Ground and a short walk to the cafés and restaurants of Clifton Road.

Features

- Three Bedrooms
- Two Bathrooms
- Separate Kitchen
- Great Transport Links
- Prime Location
- Chain Free

Lauderdale Road, Maida Vale, W9



Total area (approx.): 113.3 sq. m (1,219.5 sq. ft)