



## Shirland Road, W9

£750,000

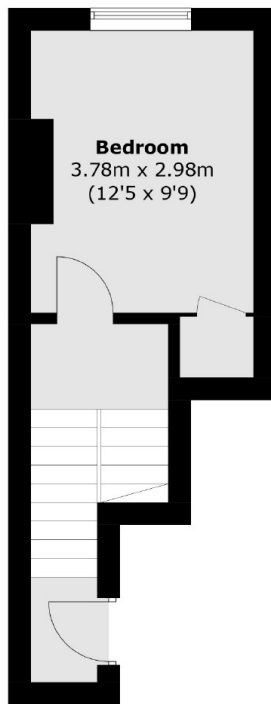
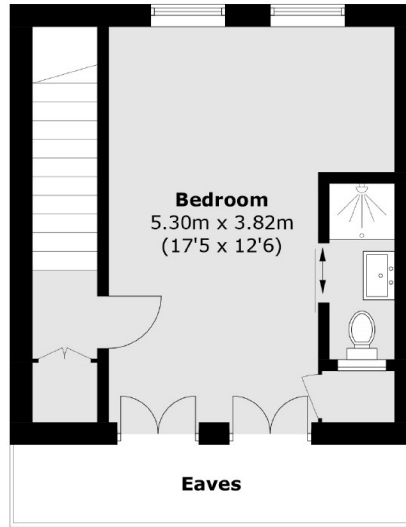
This is a split level two bedroom top floor flat which has been refurbished to a high standard. This apartment features two bathrooms, one of them en suite, separate eat in kitchen, large reception and plenty of natural light.

Shirland Road is ideally located for both Maida Vale and Warwick Avenue tube stations, the open spaces of Paddington recreational grounds and a number of independent shops, and cafés.

### Features

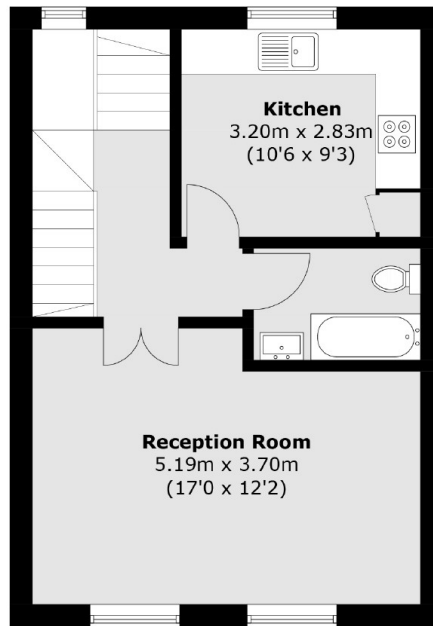
- Two Double Bedrooms
- Split Level
- Two Bathrooms
- Recently Refurbished
- Great Location
- Chain Free

# Shirland Road, Maida Vale, W9



**First Floor**

**Third Floor**



**Second Floor**

Total area (approx.): 85.2 sq. m (917.1 sq. ft)  
(Excluding Eaves)