

## Ashmore Road, W9

£650,000

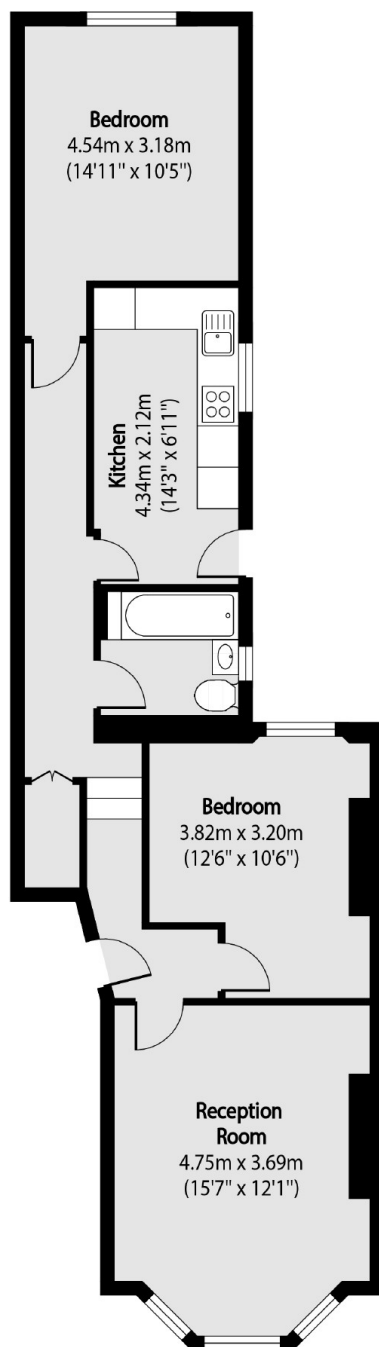
This is a refurbished ground floor two bedroom garden flat in a Victorian conversion. This home comes complete with a large reception room, separate kitchen, wooden flooring throughout and a private garden. The property is in turn-key condition and will be sold chain free.

Ashmore Road is found in the heart of W9, with the open spaces and fashionable amenities of Queens Park within easy reach as well as vibrant shops and cafes on Kilburn Lane and Shirland Road. Transport links include the Bakerloo line at Maida Vale and Queens Park and the Hammersmith and City line at Westbourne Park.

### Features

- Separate Kitchen
- Ample Storage
- Private Garden
- Wood Flooring Throughout
- Chain Free
- Great Transport Links

# Ashmore Road, Maida Vale, W9



Total area (approx): 65.96 sq m (710 sq. ft)