



Saltram Crescent, W9

£300,000

This elevated ground-floor flat features one double bedroom, an open-plan kitchen and living area, and a shower room. Offered chain-free, it's an ideal choice for rental investment or first-time buyers.

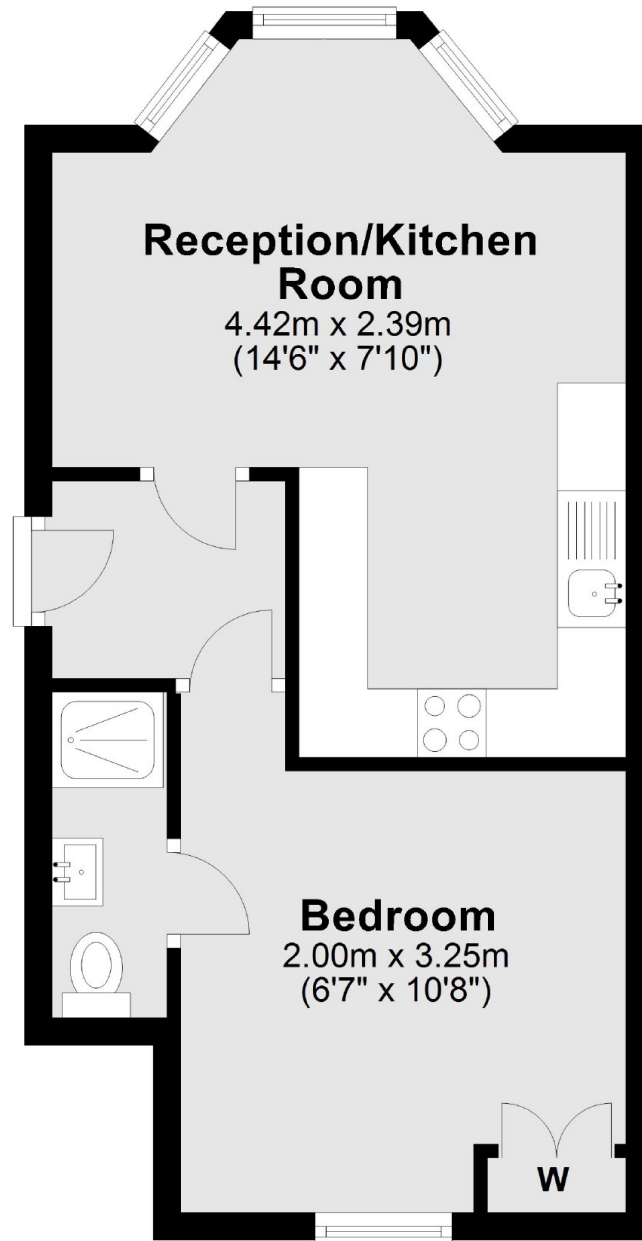
Saltram Crescent is located close to the cafés and restaurants on Salusbury Road. There are excellent transport links nearby, including Queen's Park station (Bakerloo line & Overground).

Features

- Raised Ground Floor
- One Double Bedroom
- Chain Free
- Good Condition
- Wooden Floors
- Leasehold

Saltram Crescent, Maida Vale, W9

First Floor



Total area: approx. 32.7 sq. metres (352.0 sq. feet)