



## Portnall Road, W9

£519 Per week

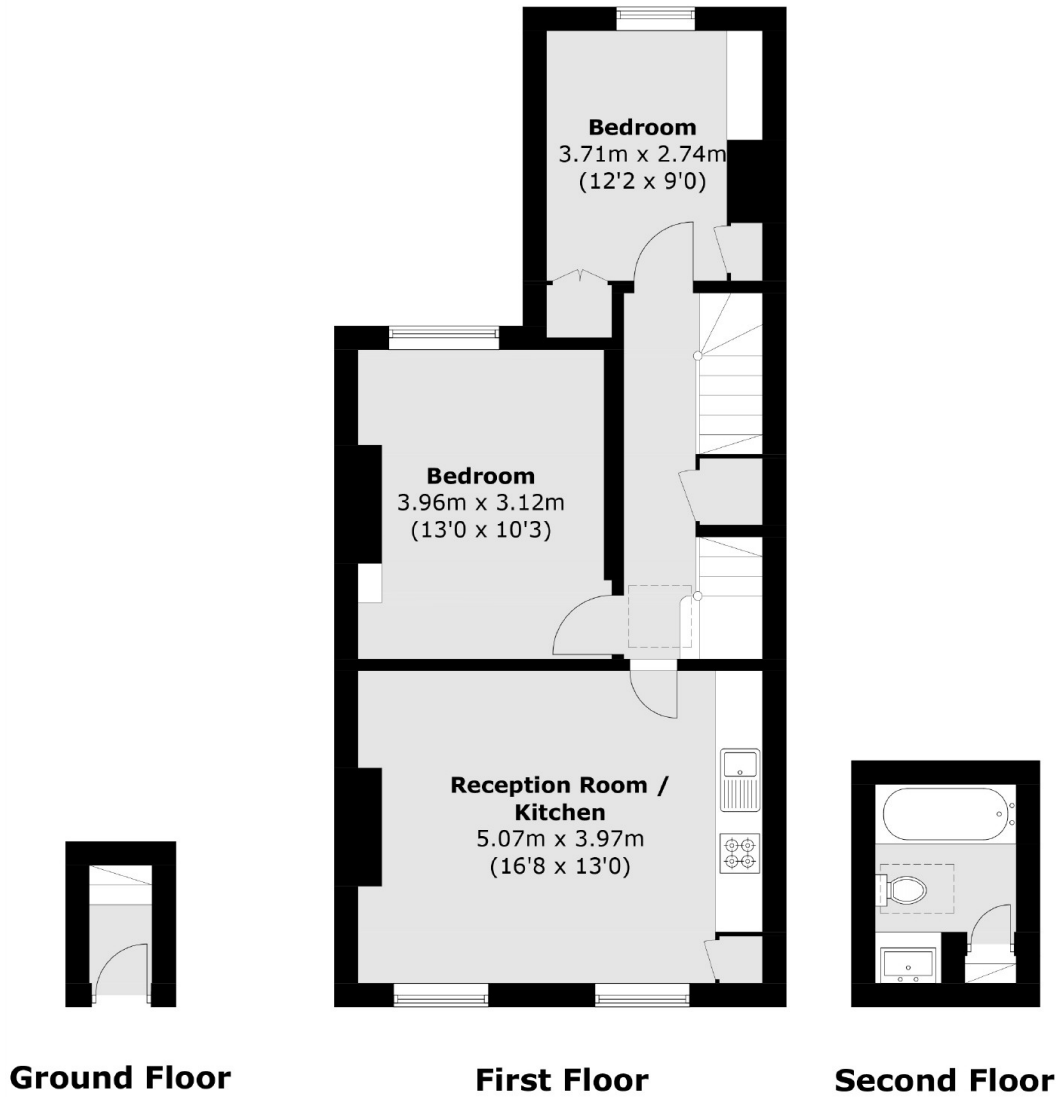
A two double bedroom split level apartment on the first and second floor of a period conversion. Layout includes a spacious open plan reception with wooden floors, two double bedrooms and a fully tiled three piece bathroom suite.

The property is within easy walking distance of Maida Vale, Notting Hill and Queens Park and the closest stations are Queens Park and Westbourne Park.

### Features

- Two Bedrooms
- Split Level
- Modern
- Wooden Floors
- Great Location
- Open Plan

# Portnall Road, Maida Vale, W9



Total area (approx.): 58.2 sq. m (613.7 sq. ft)