



## Greville Road, NW6

### £700,000

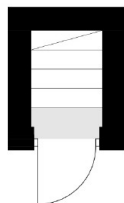
A recently refurbished three bedroom split level apartment on the first and second floor of this Georgian conversion. The property has a spacious reception with wood flooring, a semi open-plan kitchen, bathroom and two WCs.

Greville Road is conveniently located by both St John's Wood station (Jubilee Line) and St John's Wood high street, as well as Maida Vale underground station (Bakerloo Line). Within walking distance of great excellent transport links, options for shopping and restaurants.

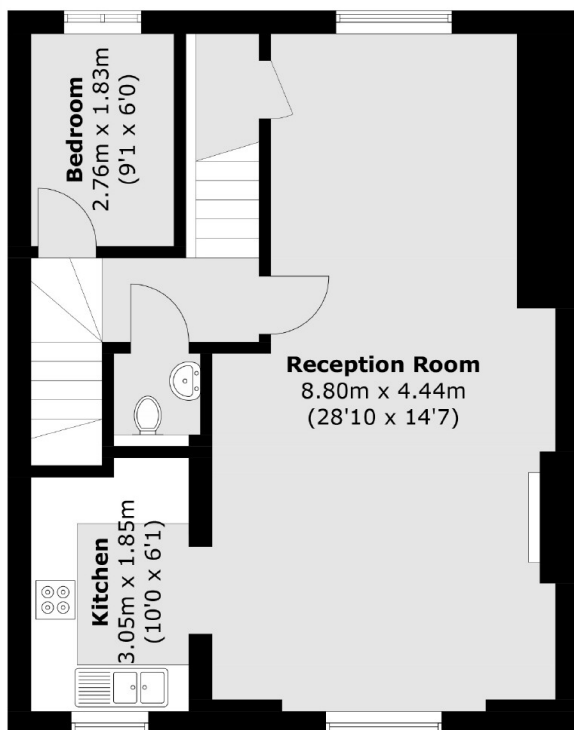
### Features

- Three Bedrooms
- Split Level
- Double Reception
- Great Location
- Long Lease
- Georgian Conversion

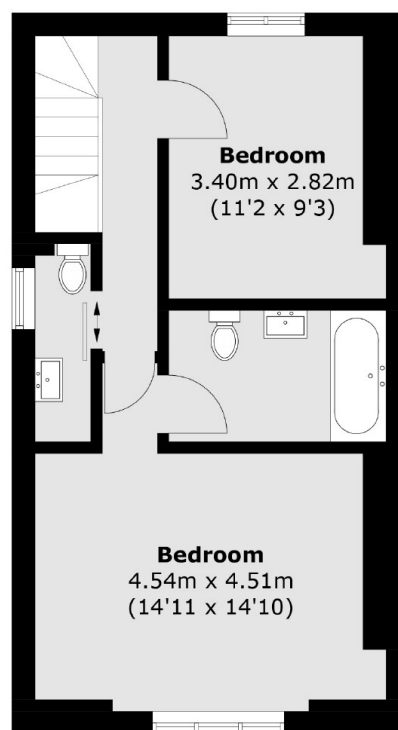
# Greville Road, London, NW6



**Ground Floor**



**First Floor**



**Second Floor**

Total area (approx.): 100.5 sq. m (1,081.7 sq. ft)