



Warlock Road, W9

£525,000

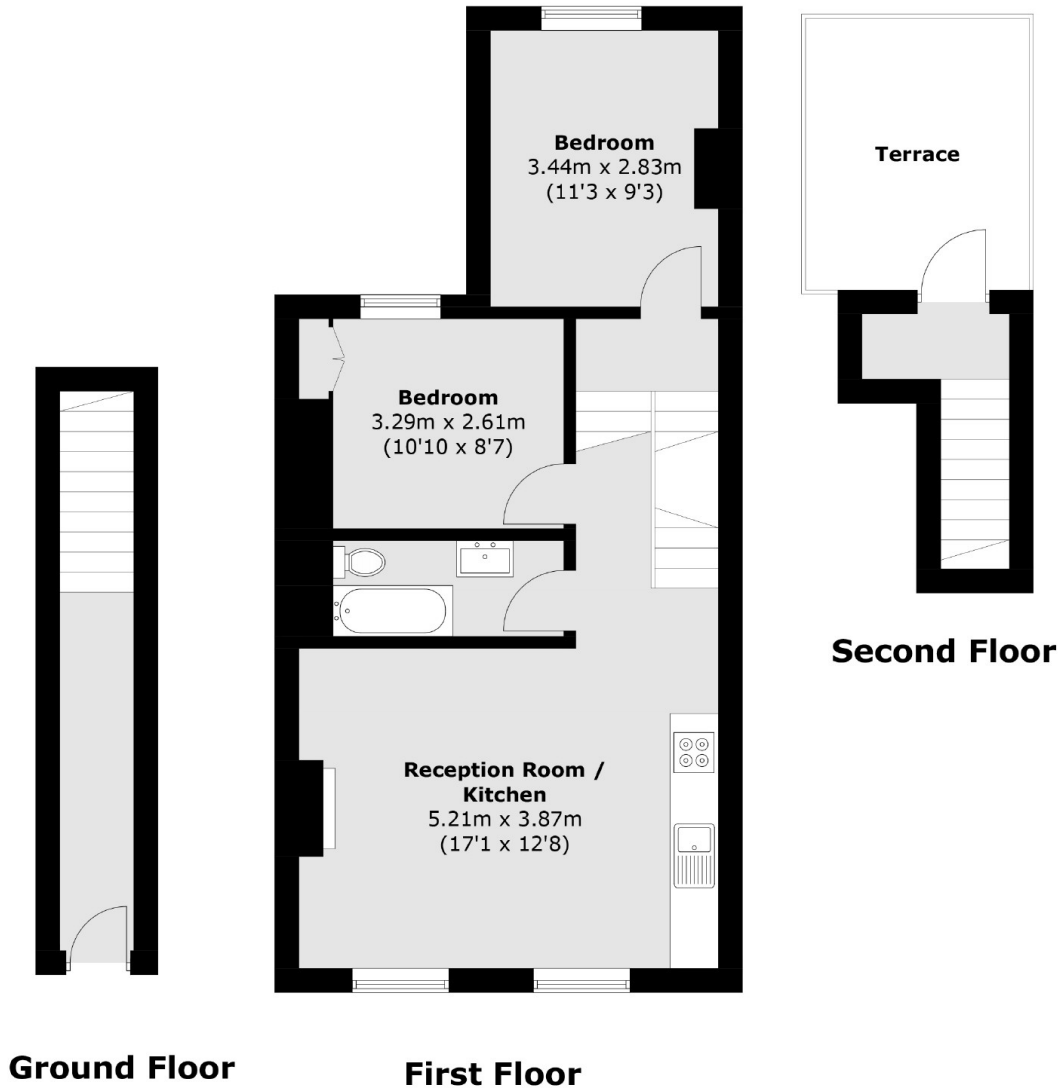
A charming two bedroom maisonette situated on the upper floors of a Victorian conversion. The property has a bright open-plan reception room, two double bedrooms, a modern bathroom suite and its own front door.

Warlock Road is within easy reach of a selection of shops, bars, restaurants and transport links in Maida Vale and Queens Park as well as the green open spaces of Paddington Rec.

Features

- Two Double Bedrooms
- Chain Free
- Open-Plan Reception
- Modern Throughout
- Private Entrance
- Great Location

Warlock Road, Maida Vale, W9



Total area (approx.): 62.4 sq. m (671.6 sq. ft)
Terrace: 9.4 sq. m (101.2 sq. ft)