



Randolph Avenue, W9

£3,230 Per week

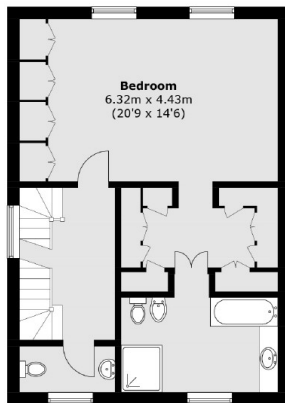
Stucco fronted townhouse with off-street parking. The property is arranged over four floors. Master bedroom with en suite bathroom and walk in wardrobe. Four further bedrooms, three bathrooms (1 en suite). Spacious Kitchen/breakfast room, separate dining room, utility room, two guest cloakrooms, study and reception room which leads onto a private terrace with stairs down to the rear garden.

The property is 0.1 mile from Maida Vale station and Paddington Recreational Ground which offers open green space as well as an athletics track and gym. In addition, there are a number tennis clubs in the immediate area. BBC Maida Vale Studios is located 0.6 miles from the property and hosts a number of live performances.

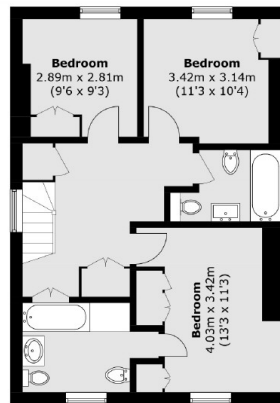
Features

Semi- Detached
Five Bedrooms
Four Bathrooms
Three Reception Rooms
Private Garden
Driveway

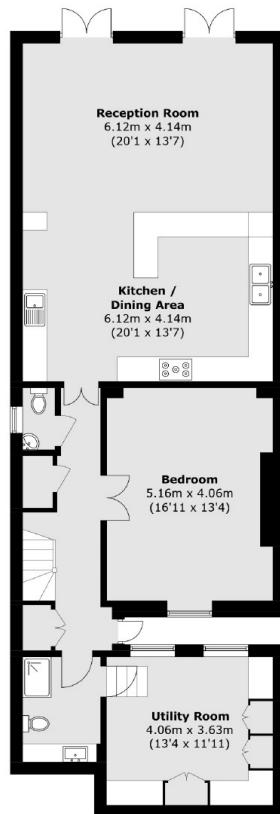
Randolph Avenue, Maida Vale, W9



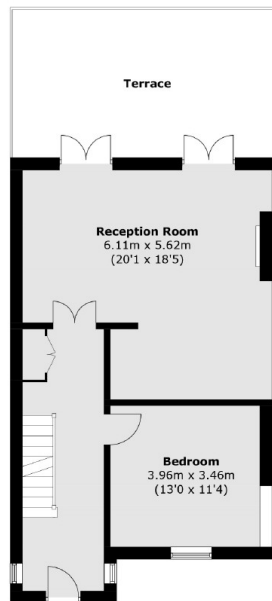
First Floor



Second Floor



Basement



Ground Floor

Total area (approx.): 279.8 sq. m (3,011.9 sq. ft)
(Including Basement)
Terrace: 24.0 sq. m (258.3 sq. ft)