



## Cambridge Avenue, NW6

### £300,000

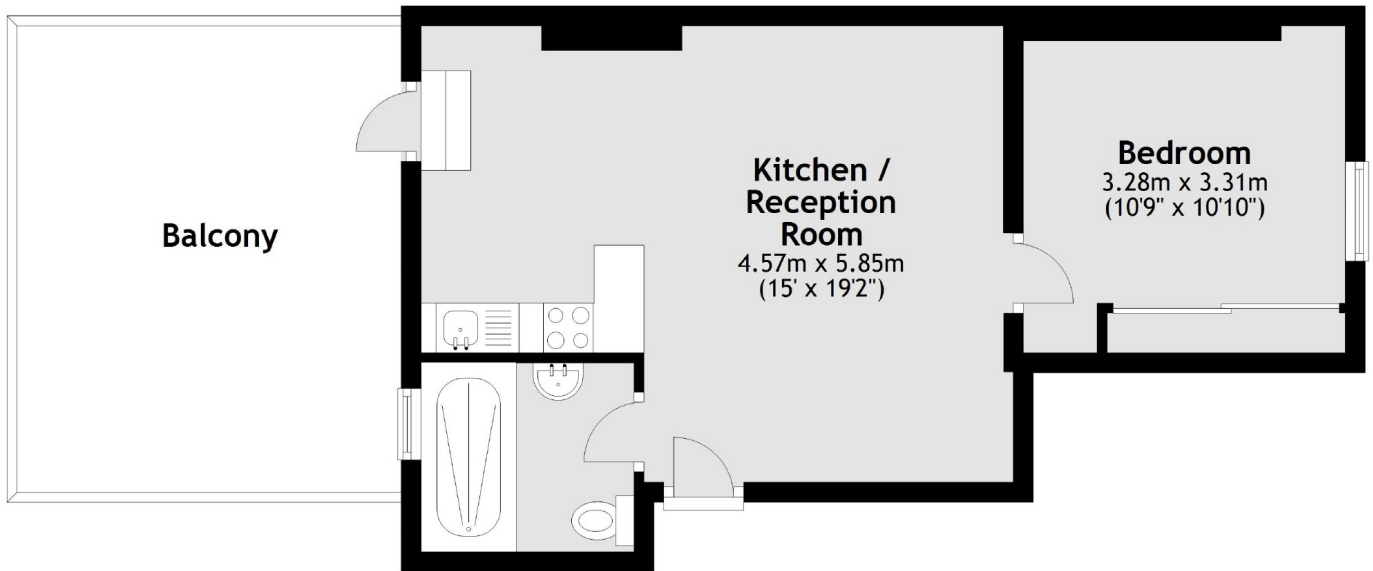
A refurbished top floor, one bedroom flat set in this period conversion. The flat offers a large living area with lots of natural light, family bathroom and a private terrace.

Cambridge Avenue, in between a variety of shops, cafés and bars on Kilburn High Road, Queen's Park and Maida Vale, is home to multiple transport links including bus routes, the Tube and Overground lines.

### Features

- Top Floor Flat
- 117 Year Lease
- Great Condition
- Ample Storage
- Private Terrace
- Great Transport Links

# Cambridge Avenue, London, NW6



Main area: Approx. 39.5 sq. metres (425.4 sq. feet)  
Plus balconies, approx. 18.5 sq. metres (198.7 sq. feet)