



Elgin Avenue, W9

£750,000

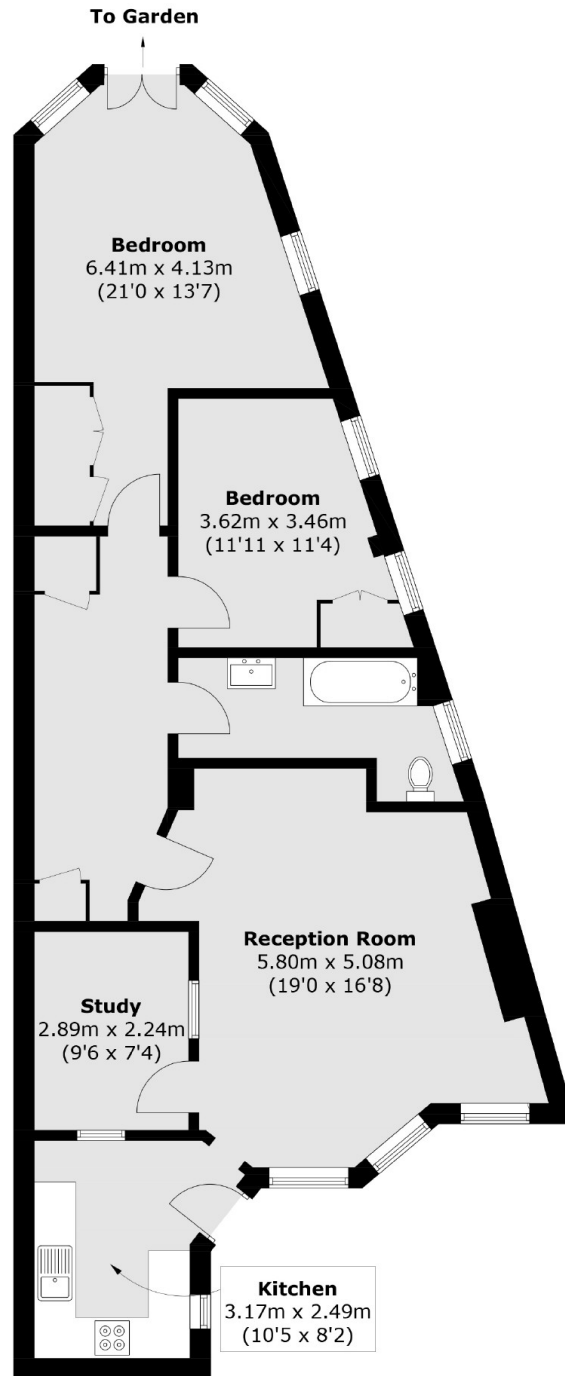
This charming two bedroom garden level flat features its own entrance and a private patio garden. The flat has wood flooring throughout, a reception room with a bay window, a fully fitted kitchen and a spacious inner hallway. The principal bedroom offers direct access to a split-level patio area, and there is a second bedroom. Additionally, the flat includes a study that with the necessary consent, could be used to extend either the kitchen or the reception room.

Nestled in the vibrant hub of Maida Vale, this property is close to Maida Vale station (Bakerloo Line), offering convenient access to local amenities such as a variety of shops, cafes, bars, and restaurants.

Features

- Chain Free
- Over 950 Sq Ft
- Share of Freehold
- Great Transport Links
- Private Patio
- End of Terrace

Elgin Avenue, Maida Vale, W9



Total area (approx.): 88.7 sq. m (954.8 sq. ft)