



Randolph Avenue, W9

£650,000

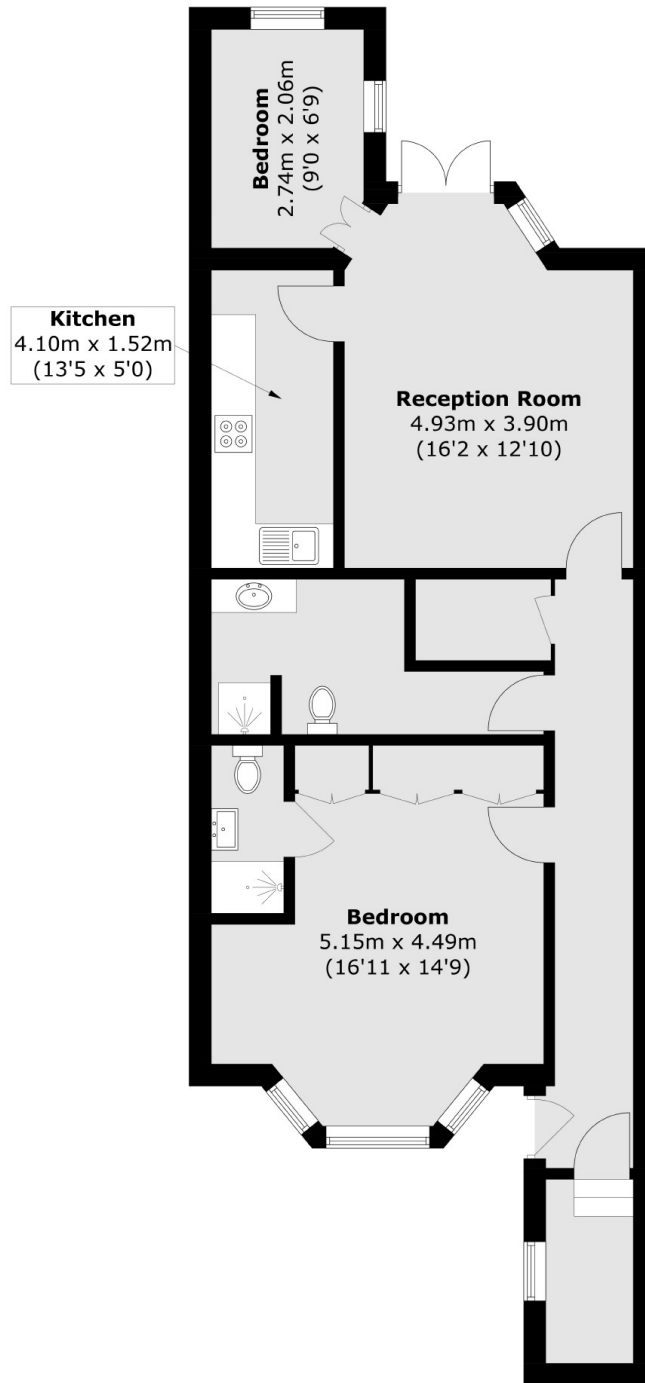
This two-bedroom garden flat, located on a desirable tree-lined avenue, features a separate kitchen, large reception, bathroom with en suite and a private garden.

Randolph Avenue is a picturesque location ideally situated for local shops and cafés alongside the entrance to Paddington recreational grounds and Maida Vale tube station. Within a quarter of a mile from multiple transport options and the canals.

Features

- Lower Ground Floor
- Wooden Floors Throughout
- Private Garden & Entrance
- Chain Free
- Separate Reception
- Great Location

Randolph Avenue, Maida Vale, W9



Total area (approx.): 76.8 sq. m (826.7 sq. ft)