



Sutherland Avenue, W9

£565,000

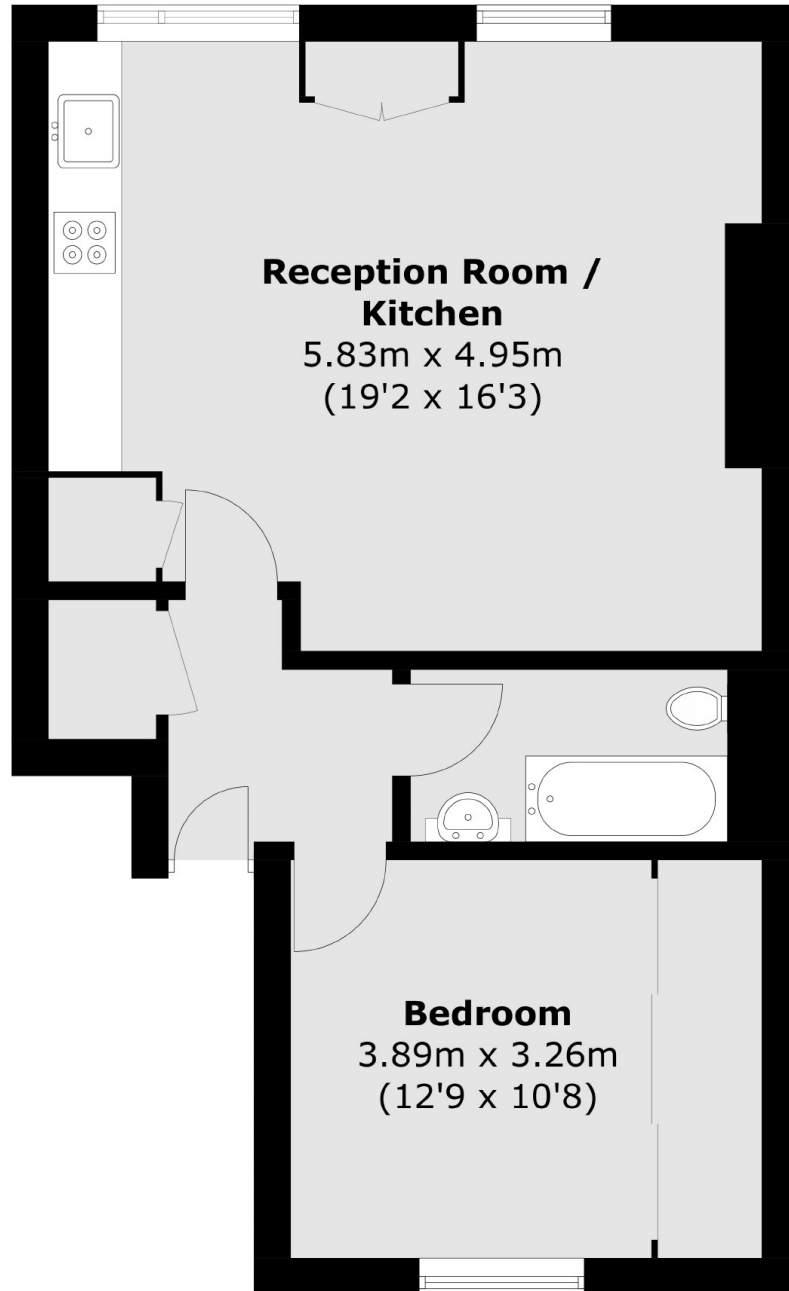
A beautifully presented one double bedroom flat on the second floor of a Victorian building. The flat has an open plan kitchen and reception room and a family bathroom. Great for a first time buyer or as a buy to let.

Sutherland Avenue is a tree-lined road in the heart of Maida Vale and within a mile of multiple transport links, including Warwick Avenue and Westbourne Park stations.

Features

- One Double Bedroom
- Share of Freehold
- Victorian Conversion
- Chain Free
- Prime Location
- Great Transport Links

Sutherland Avenue, Maida Vale, W9



Total area (approx.): 50.6 sq. m (544.6 sq. ft)