



Saltram Crescent, W9

£499 Per week

Newly refurbished ground floor garden flat with a good size reception room, two double bedrooms, modern bathroom and a separate kitchen. Large private garden with side access and wooden flooring throughout.

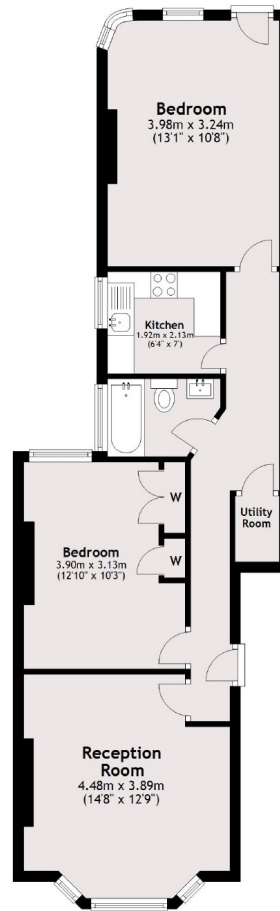
Saltram Crescent is ideally placed to offer access to Maida Vale as well as being within walking distance of Queens Park's various shops, cafes and transport links.

Features

- Ground Floor Flat
- Period Conversion
- Two Bedrooms
- Private Rear Garden
- Newly Refurbished
- Walking Distance to Maida Vale / Queen's Park

Saltram Crescent, Maida Vale, W9

Ground Floor



Total area: approx. 59.7 sq. metres (643.0 sq. feet)