



## Maida Vale, W9

£800,000

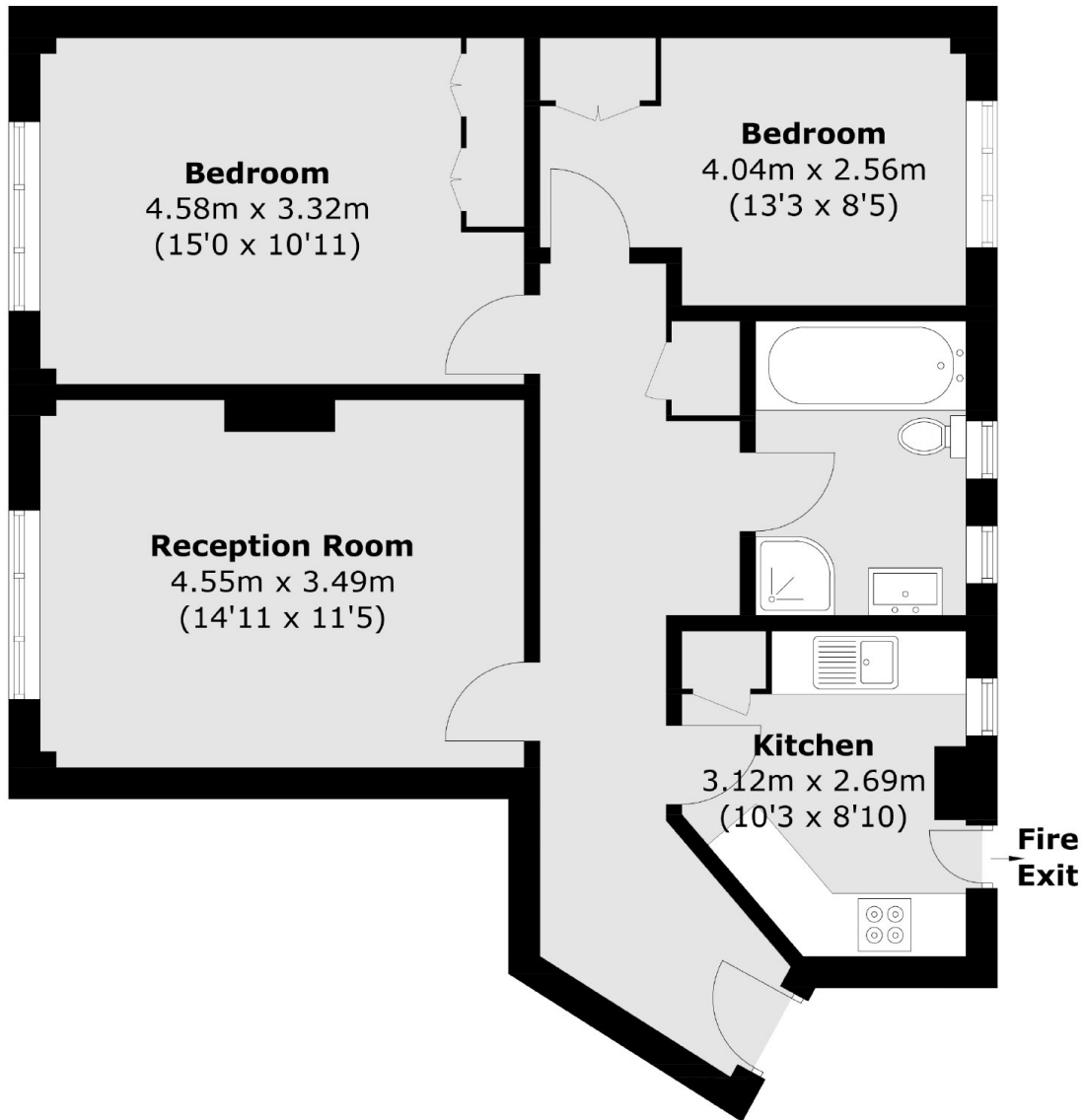
This beautifully presented two-bedroom apartment is located in a portered building in Maida Vale. Situated on the sixth floor (with lift access), the property benefits from abundant natural light and features wood flooring throughout. The flat includes a spacious reception room, a fully integrated kitchen, two bedrooms, a family bathroom, a cloakroom, and ample storage space.

Florence Court is a quaint development in Maida Vale, conveniently situated near the amenities on Elgin Avenue, Maida Vale Station (Bakerloo Line), and Paddington Recreation Ground.

### Features

- Sixth Floor
- Chain Free
- Porter & Lift Access
- Recently Renovated
- Prime Location
- Long Lease Length

# Maida Vale, Maida Vale, W9



Total area (approx.): 70.0 sq. m (753.5 sq. ft)