

## Randolph Gardens, NW6

£329 Per week

Recently refurbished one bedroom flat located on the first floor. Good size reception room, modern separate kitchen, large double bedroom with fitted storage space and ensuite shower room. Additional WC and allocated parking space.

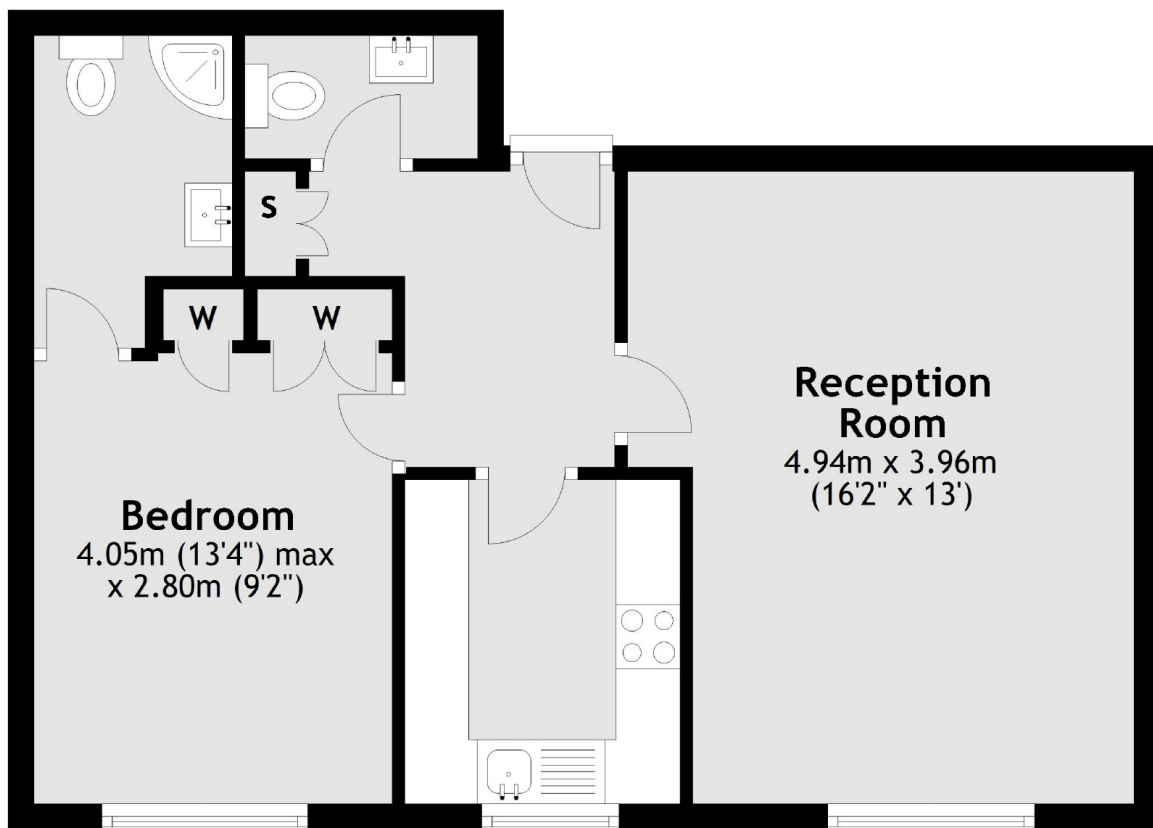
Randolph Gardens is located a short walk from Maida Vale tube station giving you quick access to the City and Central London on the Bakerloo Line

### Features

- One Bedroom Flat
- Purpose Built Flat
- Separate Kitchen
- Ensuite Shower Room
- Separate WC
- Parking Space

Randolph Gardens,  
London, NW6

## First Floor



Total area: approx. 45.8 sq. metres (492.5 sq. feet)

### Contact

To arrange a viewing call our office on the number below or visit our website.



Energy Rating: . We aim to make our particulars both accurate and reliable. However they are not guaranteed; nor do they form part of an offer or contract. If you require clarification on any points then please contact us, especially if you're traveling some distance to view. Please note that appliances and heating systems have not been tested and therefore no warranties can be given as to their good working order.