



Carlton Vale, NW6

£400,000

Available chain free on the first floor is a modern one double bedroom flat in this purpose built block. The flat comprises of a family bathroom with a large reception area with direct access leading to a private balcony.

Carlton Vale is ideally situated for easy access to Kilburn High Road, Maida Vale and Queens Park for a number of local shops, cafés, restaurants, Paddington Recreational Ground and transport links.

Features

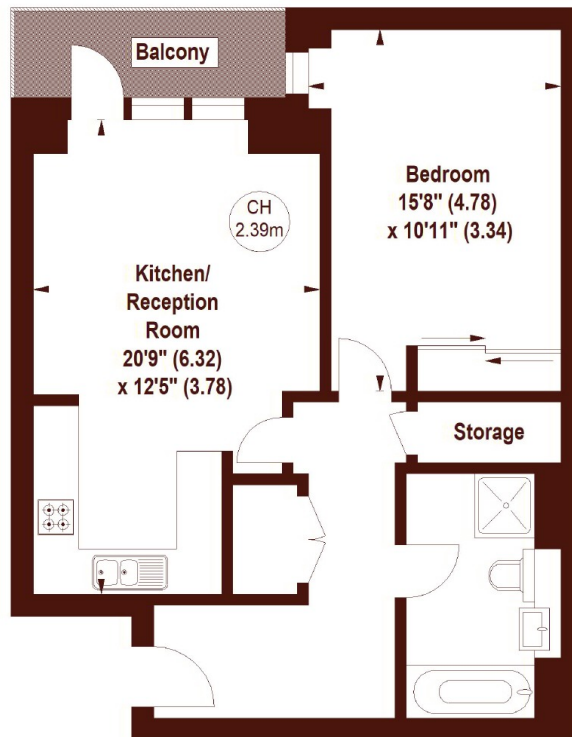
- New Build Development
- Second Floor Flat
- One Bedrooms
- Private Balcony
- Passenger Lift
- Close to Public Transport

Carlton Vale, London, NW6

Franklin House, Carlton Vale, NW6

APPROX. GROSS INTERNAL FLOOR AREA 607 SQFT / 56.39 SQM

Key :
CH - Ceiling Height



SECOND FLOOR

Not to scale, for guidance only and must not be relied upon as a statement of fact.
All measurements and areas are approximate only