



## Ashmore Road, W9

### £450,000

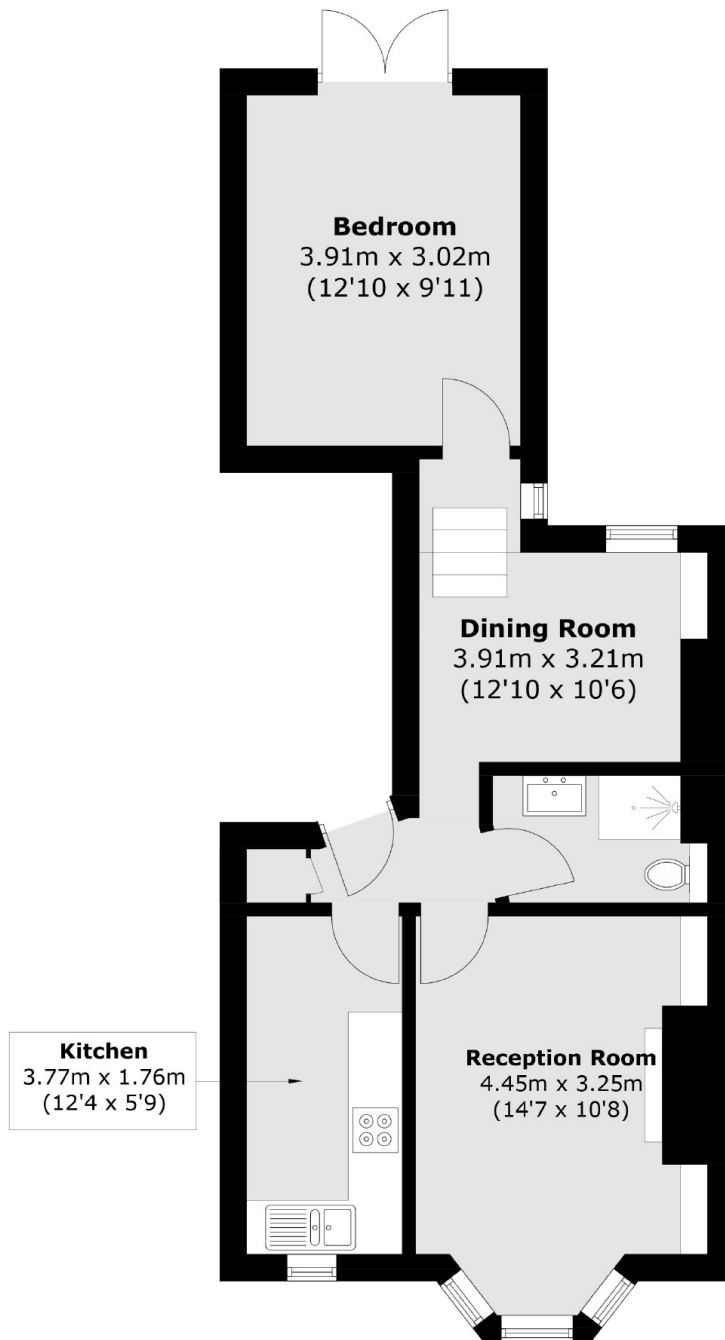
Set in a characterful Victorian conversion is this one bedroom flat apartment. The flat has two spacious reception rooms, with a large bay window, separate kitchen, a family bathroom and ample storage.

Ashmore Road offers excellent access to Queen's Park and Westbourne Park, with numerous transport links to Central London. It is also within a mile of Little Venice, Portobello, and Paddington Recreation Ground.

### Features

- One Bedroom
- Two Reception Rooms
- Share Of Freehold
- Period Conversion
- Transport Links
- High Ceilings

# Ashmore Road, Maida Vale, W9



Total area (approx.): 48.6 sq. m (523.1 sq. ft)