



Randolph Avenue, W9

£895 Per week

A modern three double bedroom, two bathroom split level apartment to rent ideally located for Maida Vale Underground Stations (Bakerloo Line) and local amenities. The property comprises; three double bedrooms all with fitted wardrobes (Main bedroom with en-suite), a family bathroom, separate kitchen, spacious reception room with direct access to a private roof terrace.

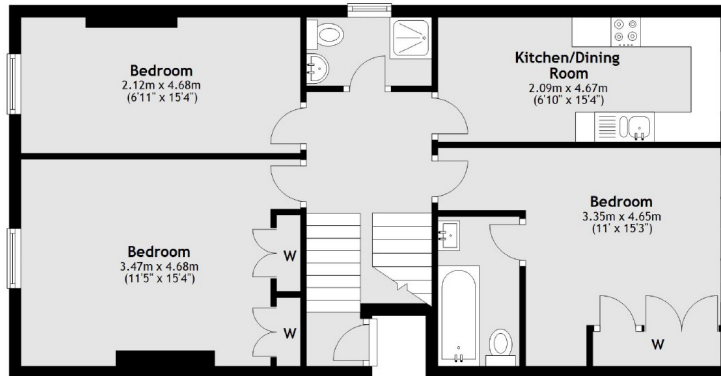
On the beautiful tree-lined Randolph Avenue and across the road from Maida Vale tube station, the property is well-located for a number of local amenities including Paddington recreational grounds.

Features

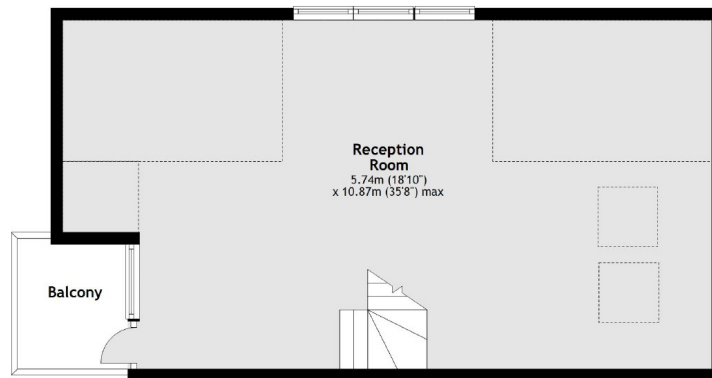
- Three double bedroom
- Spacious reception room
- Fully fitted kitchen
- Two bathrooms
- Wood flooring
- Private roof terrace

Randolph Avenue, Maida Vale, W9

Second Floor



Third Floor



Main area: Approx. 124.7 sq. metres (1342.0 sq. feet)
Plus balconies, approx. 4.3 sq. metres (46.0 sq. feet)