



Macroom Road, W9

£750,000

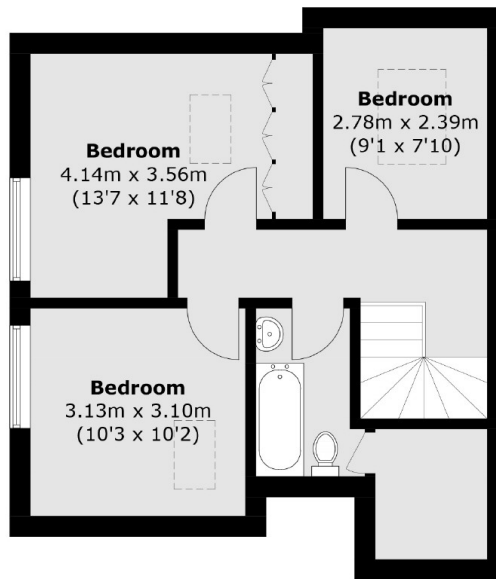
Nestled within a stunning converted church on Macroom Road, this exceptional three-bedroom duplex apartment occupies the first and second floors. The desirable layout includes a spacious double reception room, a separate dining area, a well-appointed kitchen, three double bedrooms, a sizable bathroom, and a cloakroom, spanning over 1200 square feet.

Macroom Road is a picturesque, tree-lined street between Queen's Park and Maida Vale. Enjoy excellent cafes, restaurants, shops, and pubs on Salusbury Road and Elgin Avenue, with Portobello Road nearby. Green spaces like Paddington Recreation Ground and the Grand Union Canal towpaths are close. Convenient transport includes Queen's Park and Maida Vale Stations (Bakerloo line and London Overground). The esteemed Maida Vale School on Saltram Crescent adds to the appeal.

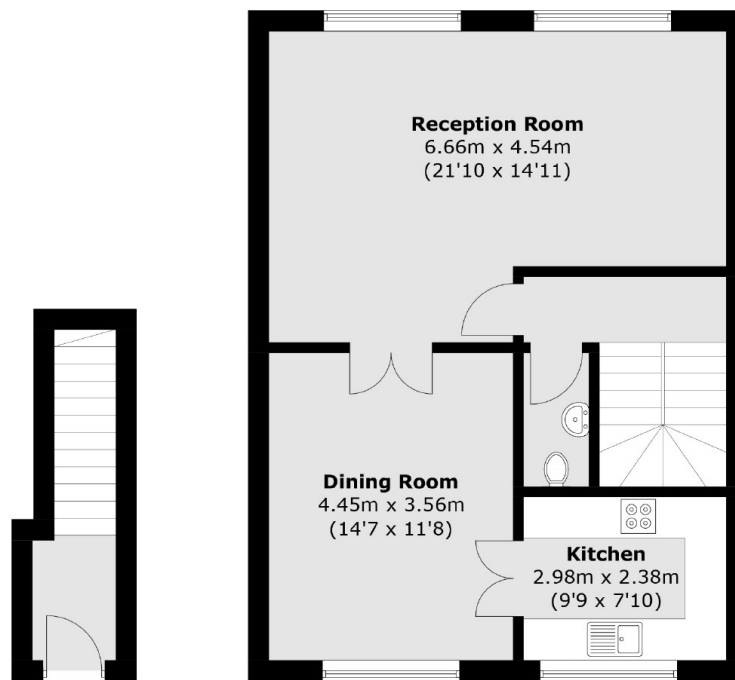
Features

- Private Entrance
- Share Of Freehold
- Church Conversion
- Chain Free
- Great Transport Links
- Split-Level

Macroom Road, Maida Vale, W9



Second Floor



Ground Floor

First Floor

Total area (approx.): 111.7 sq. m (1,202.3 sq. ft)