



Ashmore Road, W9

£553 Per week

This split-level two bedroom maisonette opens up into a spacious open-plan kitchen / reception with two double bedrooms and a stylish bathroom suite on the top floor.

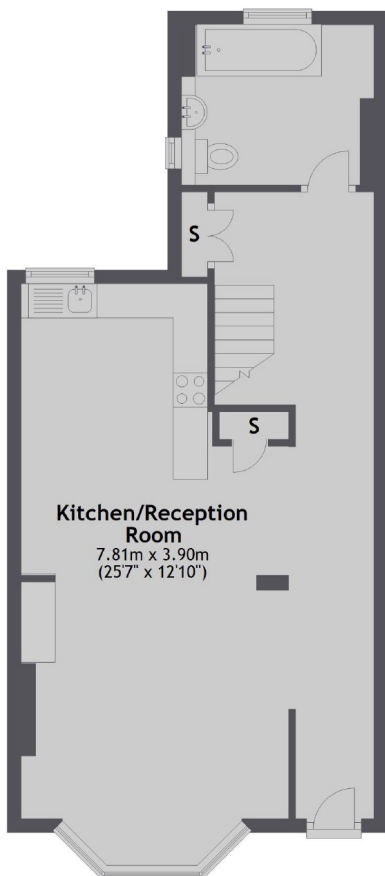
Situated towards the Harrow Road end of Ashmore Road, you are close to a number of shops and cafes with Queens Park in the opposite direction.

Features

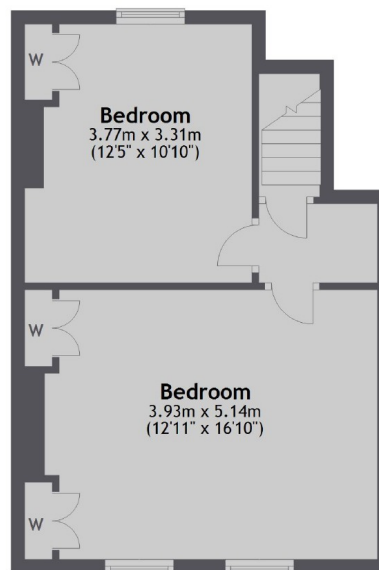
- Period Conversion
- Maisonette
- Raised Ground Floor
- Two Bedrooms
- Open-Plan
- Great Location

Ashmore Road, Maida Vale, W9

Ground Floor



First Floor



Total area: approx. 88.4 sq. metres (951.5 sq. feet)