



Hall Road, NW8

£1,500,000

Dexters



Hall Road, NW8

This charming first-floor, four-bedroom apartment (1,588 sq ft / 148.5 sq m) in excellent condition offers stunning southerly views. Located in a prestigious portered block in the heart of St John's Wood, this bright residence features a master bedroom with an en-suite bathroom, three additional bedrooms, a family shower room, a family bathroom, two reception rooms, and a separate kitchen.

Entering Grove Hall Court, you encounter recently renovated communal areas. A 24-hour porter service ensures security, and passenger lifts provide easy upper-floor access. The entryway opens to a spacious hallway, bright and airy. To the right are two inviting reception rooms and a separate, well-appointed kitchen with modern appliances and ample counter space. The hallway leads to a generous master bedroom with an en-suite bathroom, featuring high-quality fixtures. Further down, three additional bedrooms. The apartment includes a family shower room and bathroom.

Grove Hall Court boasts newly renovated communal spaces, round-the-clock porter services, and passenger elevators. It is ideally situated just a short distance from the chic boutiques and cafes of St. John's Wood High Street. Additionally, it offers convenient access to St. John's Wood Underground (Jubilee Line) and Maida Vale Station (Bakerloo Line).

Features

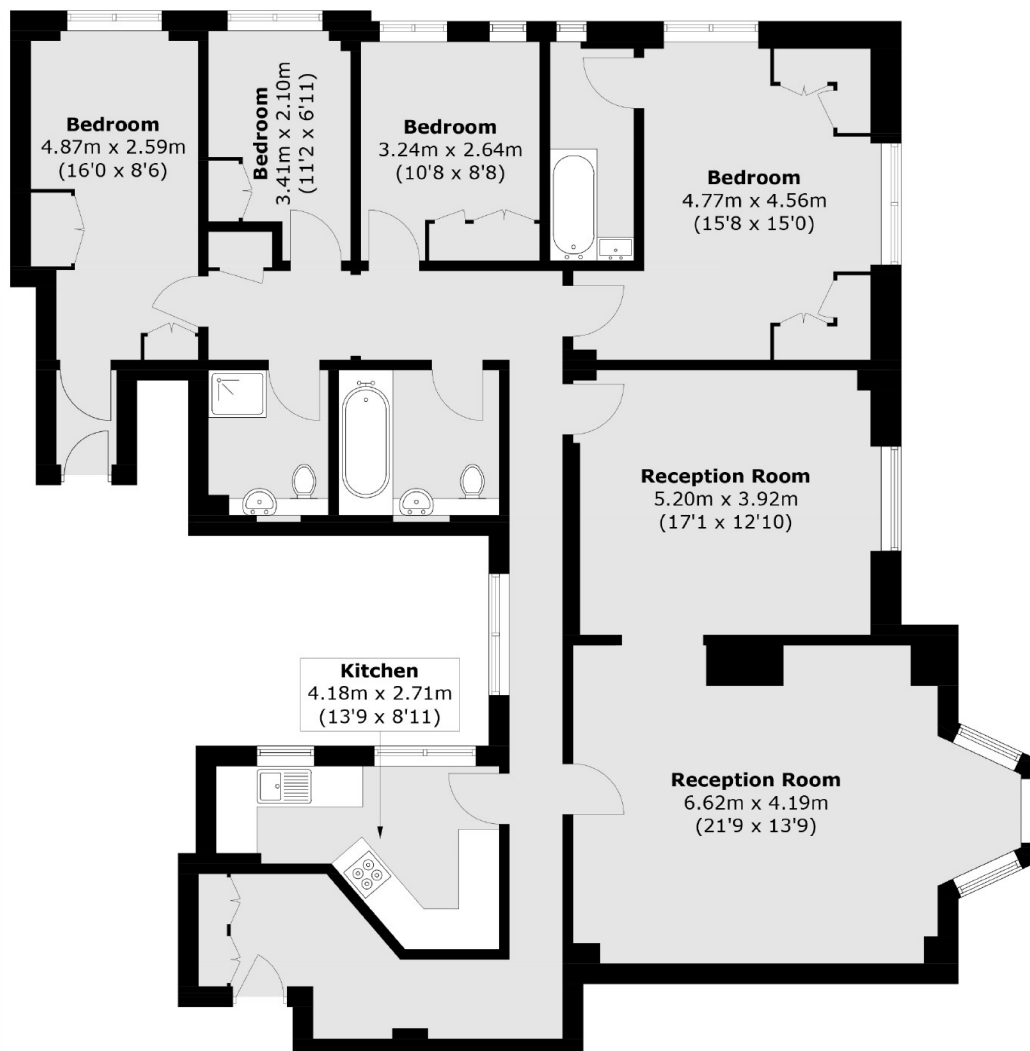
- Prime Location
- Chain Free
- Long Leasehold
- Triple Aspect Views
- First Floor
- Lateral Apartment







Hall Road, London, NW8



Total area (approx.): 142.7 sq. m (1,536.0 sq. ft)