



Fernhead Road, W9

£515,000

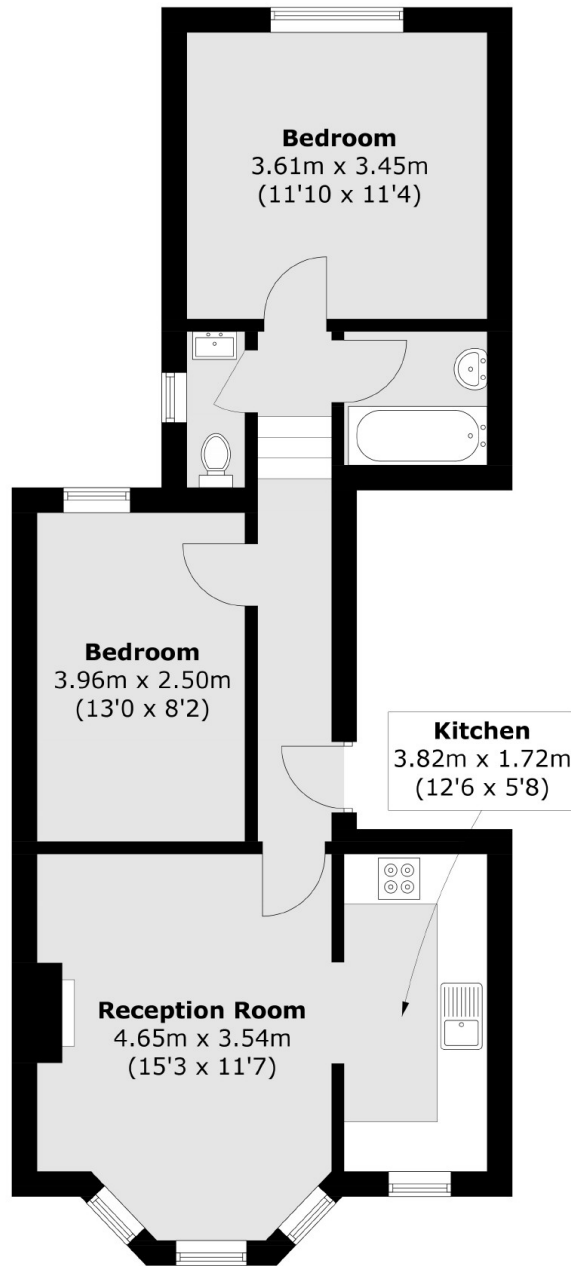
This two-bedroom flat, located on the first floor of a Victorian conversion, features a spacious reception room with a bay window, a family bathroom, a separate W/C, and a separate fitted kitchen.

Fernhead Road offers excellent access to Queen's Park and Westbourne Park, with numerous transport links to Central London. It's conveniently located within a mile of popular destinations such as Little Venice, Portobello, and Paddington Recreation Ground.

Features

- First Floor Flat
- Share Of Freehold
- Great Transport Links
- Victorian Conversion
- Chain Free
- High Ceilings

Fernhead Road, Maida Vale, W9



Total area (approx.): 56.9 sq. m (612.4 sq. ft)