



St. James's Terrace Mews, NW8

£1,640,000

Dexters



St. James's Terrace Mews, NW8

Located on a tranquil residential street, this spacious three-bedroom townhouse offers easy access to Primrose Hill and Regents Park. Spanning four floors, it features an open-plan kitchen/dining area, a 23-ft. Reception room with balcony access, a principal bedroom suite with built-in storage, two additional bedrooms with en-suite facilities, a utility room, and an extra family bathroom.

Entering from the serene street, this townhouse features an integral garage for secure parking and storage. The first floor offers an open-plan kitchen and dining area, complemented by a separate utility room and a double bedroom. The second floor boasts a spacious 23-foot reception room with balcony access, ideal for relaxation and entertainment. Ascending to the third floor, two additional bedrooms provide privacy, one with en-suite facilities, alongside a family bathroom. The top floor includes a generous south-facing private decked roof terrace, perfect for outdoor gatherings and panoramic views.

St. James's Terrace Mews is on a serene residential street in central St. John's Wood. It's just 0.5 miles from St. John's Wood High Street and about 0.7 miles from St. John's Wood underground station (Jubilee line). The American School of London is approximately 0.8 miles away. Nearby, residents can enjoy Primrose Hill and Regents Park for recreation.

Features

- Chain Free
- Three Bathrooms
- Internal Garage
- Modern Condition
- Prime Location
- South Facing Terrace





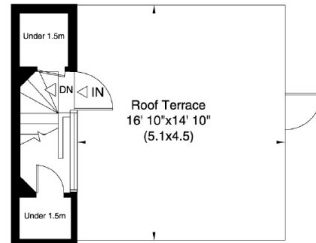


St. James's Terrace Mews, London, NW8

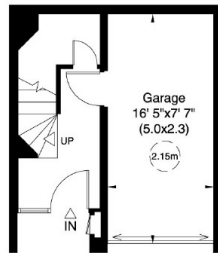
Gross internal area (approx.)
150 Sq m (1617 Sq ft) Including Under 1.5m
145 Sq m (1563 Sq ft) Excluding Under 1.5m
Void Area 4 Sq m (39 Sq ft)
For identification only, Not to Scale



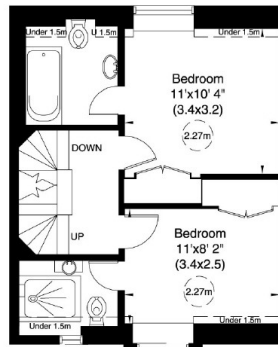
capital 020 8671 7722



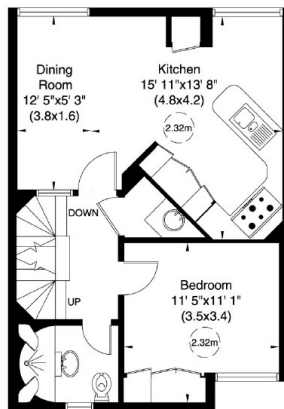
Gross internal area (approx.)
5 Sq m (58 Sq ft)
Including Under 1.5m
Gross internal area (approx.)
3 Sq m (32 Sq ft) Excluding
Under 1.5m



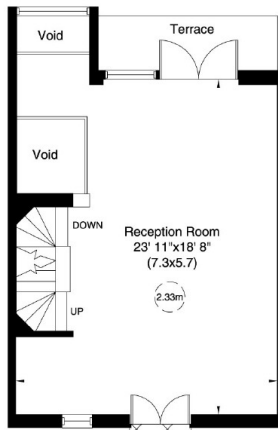
Ground Floor
Gross internal area (approx.)
20 Sq m (213 Sq ft)



Third Floor
Gross internal area (approx.)
38 Sq m (412 Sq ft) Including Under 1.5m
Gross internal area (approx.)
36 Sq m (384 Sq ft) Excluding Under 1.5m



First Floor
Gross internal area (approx.)
47 Sq m (507 Sq ft)



Second Floor
Gross internal area (approx.)
39 Sq m (427 Sq ft)