



Randolph Avenue, W9

£925,000

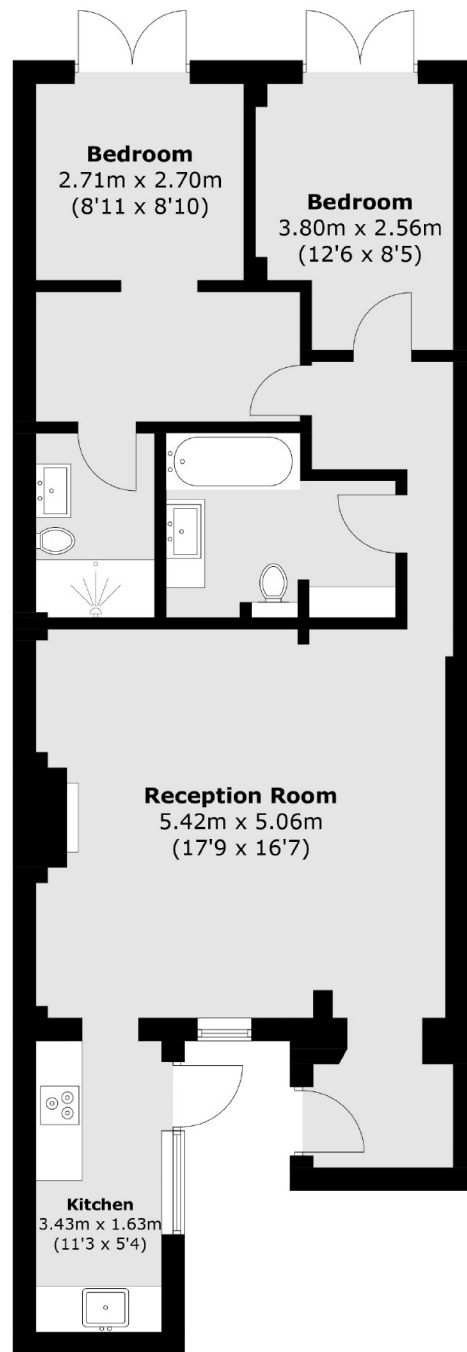
This delightful garden apartment adjacent to the canal in prime Little Venice boasts a private entrance and a lovely garden for outdoor enjoyment. Inside, a spacious living and dining area with large windows offers abundant natural light. The modern kitchen is well-equipped. The flat is in a stunning white stucco fronted house and is ideal for dog owners. With two sizable bedrooms, the main bedroom includes an en suite bathroom. A second bathroom adds convenience for guests.

Situated in the heart of Little Venice, this property offers an ideal location to experience the vibrant amenities of the area. Just a short stroll away, you'll find the charming cafés, restaurants, and boutiques of Clifton Road and Formosa Street. Additionally, the tranquil waterways of the Regent's Canal are right at your doorstep, providing the perfect blend of dynamic city living and a serene retreat.

Features

- Private Entrance
- Chain Free
- White Stucco Fronted
- Prime Location
- Private Garden
- Great Transport Links

Randolph Avenue, Maida Vale, W9



Total area (approx.): 76.8 sq. m (826.7 sq. ft)