



## Shirland Road, W9

£450 Per week

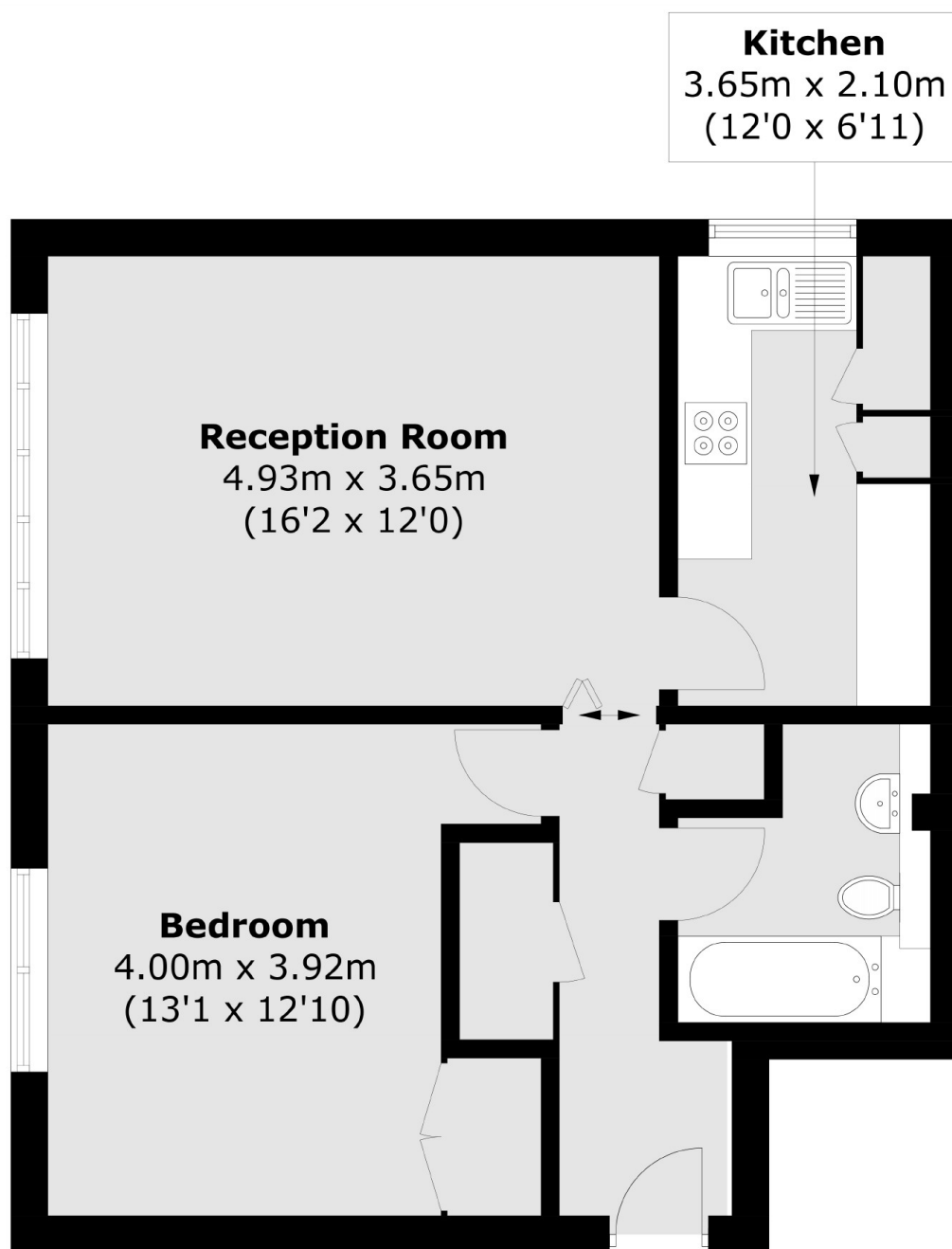
Situated on the sixth floor of a purpose built development with a lift is this spacious one bedroom flat with a large reception room, separate modern kitchen, double bedroom with built-in wardrobe and bathroom suite.

Oak Tree House is nestled between Shirland Road and Delaware Road in the heart of Maida Vale, moments from a host of local shops and cafes and within easy reach of Little Venice, Maida Vale and Warwick Avenue.

### Features

- One Bedroom Flat
- Purpose Built
- Passenger Lift
- Sixth Floor
- Wooden Flooring
- Great Location

# Shirland Road, Maida Vale, W9



## Sixth Floor

Total area (approx.): 53.4 sq. m (574.8 sq. ft)