



Sutherland Avenue, W9

£800,000

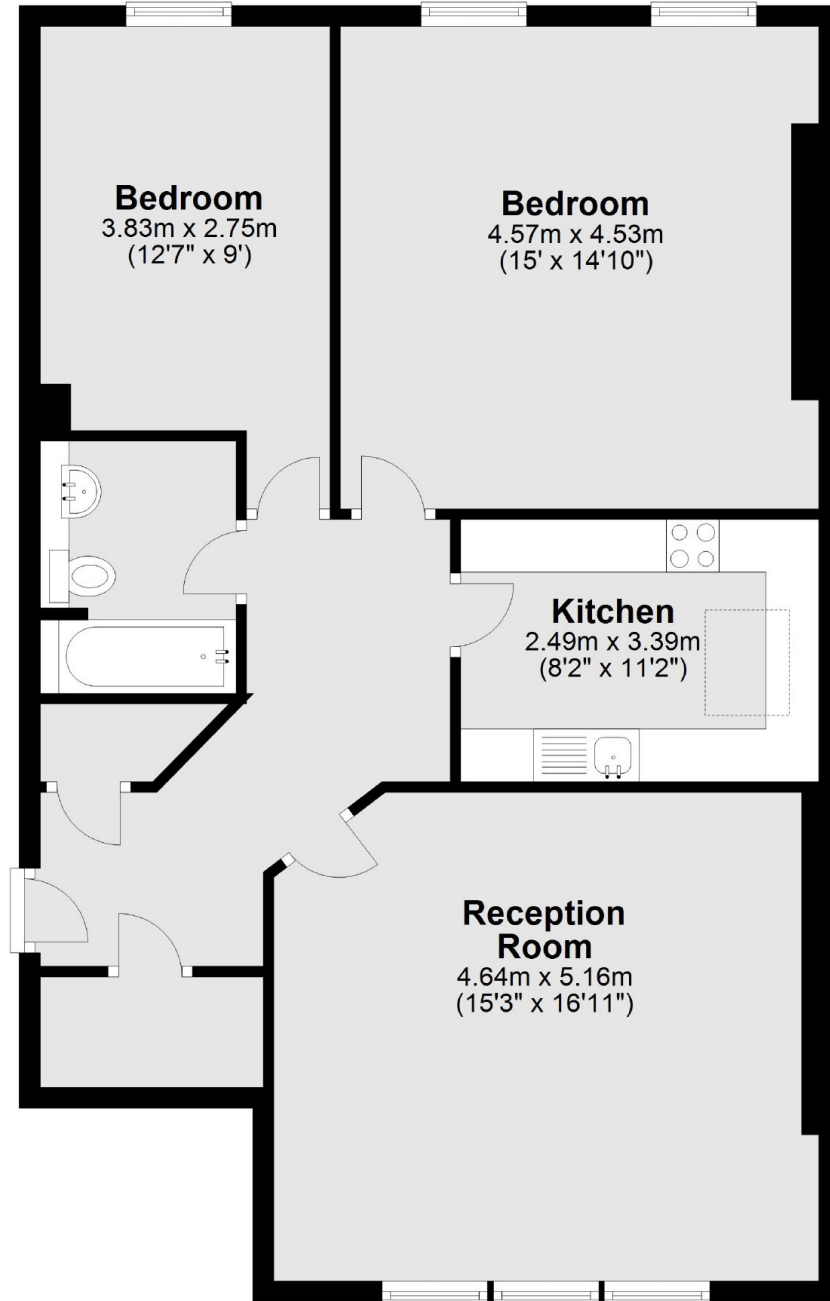
A stunning two-bedroom flat (901 sq ft / 83.7 sq m) located on the top floor of a charming period conversion in Little Venice. This fabulous property boasts a spacious and bright reception room, a separate fitted kitchen, two double bedrooms, and a bathroom. Additional features include period details, skylights, and ample lateral living space.

Sutherland Avenue is a highly sought-after, tree-lined street just steps from the charming cafés, restaurants, and boutique shops on Clifton Road and Lauderdale Parade. Both Warwick Avenue and Maida Vale underground stations are within a short walking distance.

Features

- Lateral Top Floor Flat
- Communal Gardens
- Chain Free
- Prime Location In Little Venice
- Great Transport Links
- Victorian Conversion

Sutherland Avenue, Maida Vale, W9



Total area: approx. 83.7 sq. metres (901.2 sq. feet)