



## Elgin Avenue, W9

£675,000

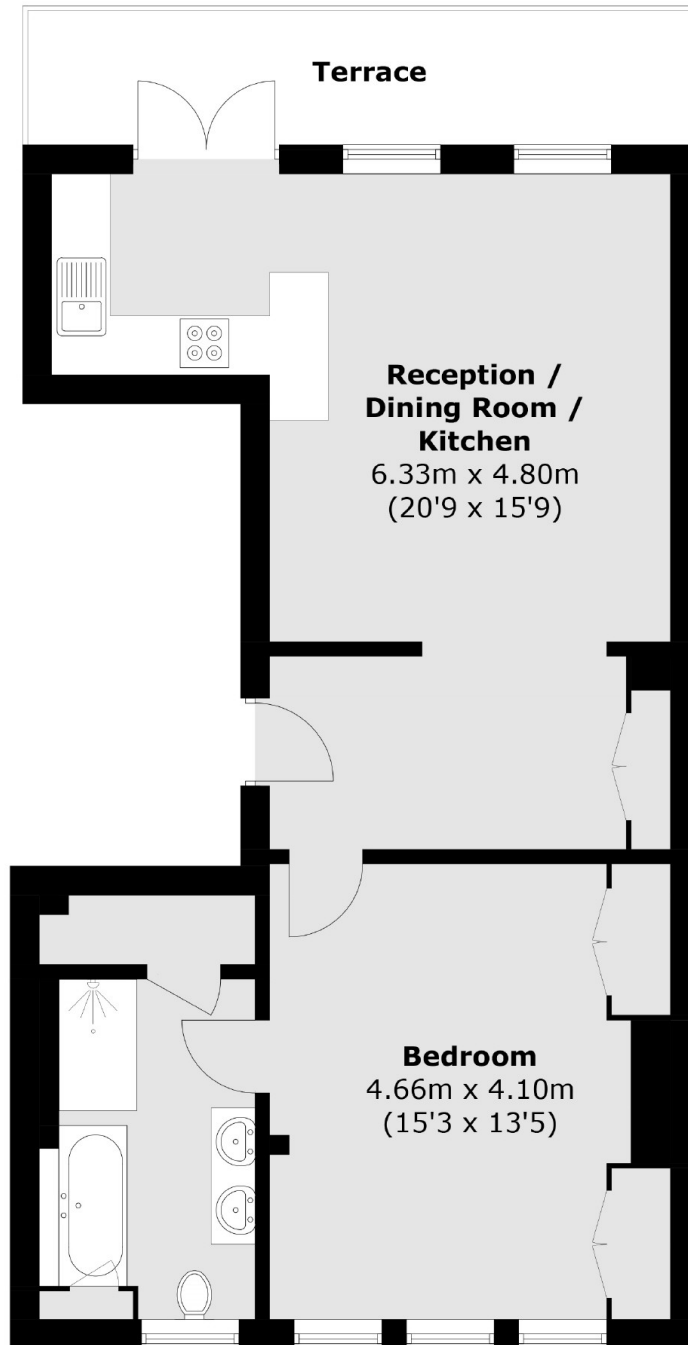
A stunning one double bedroom flat, gracefully located on the first floor of a Victorian terrace conversion. This exceptional residence boasts an en suite bathroom, a flexible dining or office space, and a generous reception/kitchen area seamlessly connecting to a private balcony. Retaining its delightful period features, this property is ideally situated in a highly sought-after location.

Nestled in the vibrant hub of Maida Vale, this property sits merely 500 ft from Maida Vale station (Bakerloo Line), offering convenient access to local amenities such as a variety of shops, cafes, bars, and restaurants.

### Features

- Prime Location
- High Ceilings
- Private Balcony
- Share Of Freehold
- Chain Free
- Great Transport Links

# Elgin Avenue, Maida Vale, W9



Total area (approx.): 63.4 sq. m (682.4 sq. ft)  
Terrace: 9.3 sq. m (100.1 sq. ft)