



Kilburn Park Road, NW6

£500,000

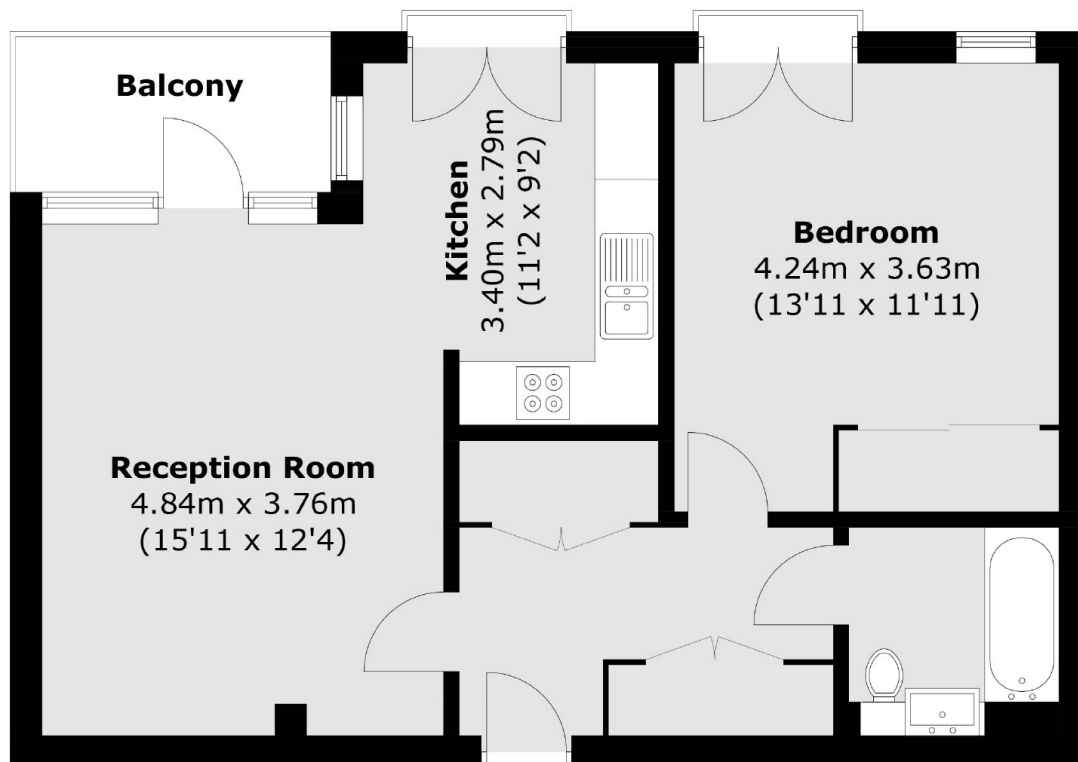
A stunning one-bedroom apartment located on the third floor, featuring bright and spacious interiors with high-end finishes. This property includes a modern bathroom and a private balcony accessible from the living room. Residents have access to expansive communal grounds, making this an ideal choice for first-time buyers or as a rental investment.

Perfectly situated near to Paddington Recreation Ground, this location offers the serene ambiance of Maida Vale and Little Venice, along with the vibrant energy of Kilburn Park and Queens Park.

Features

- Underfloor Heating
- Private Balcony
- Neff Integrated Appliances
- Communal Gardens
- Modern Development
- Lift & Security Fob Access

Kilburn Park Road, London, NW6



Total area (approx.): 57.1 sq. m (614.6 sq. ft)
Balcony: 4.4 sq. m (47.3 sq. ft)