



Croxley Road, W9

£765,000

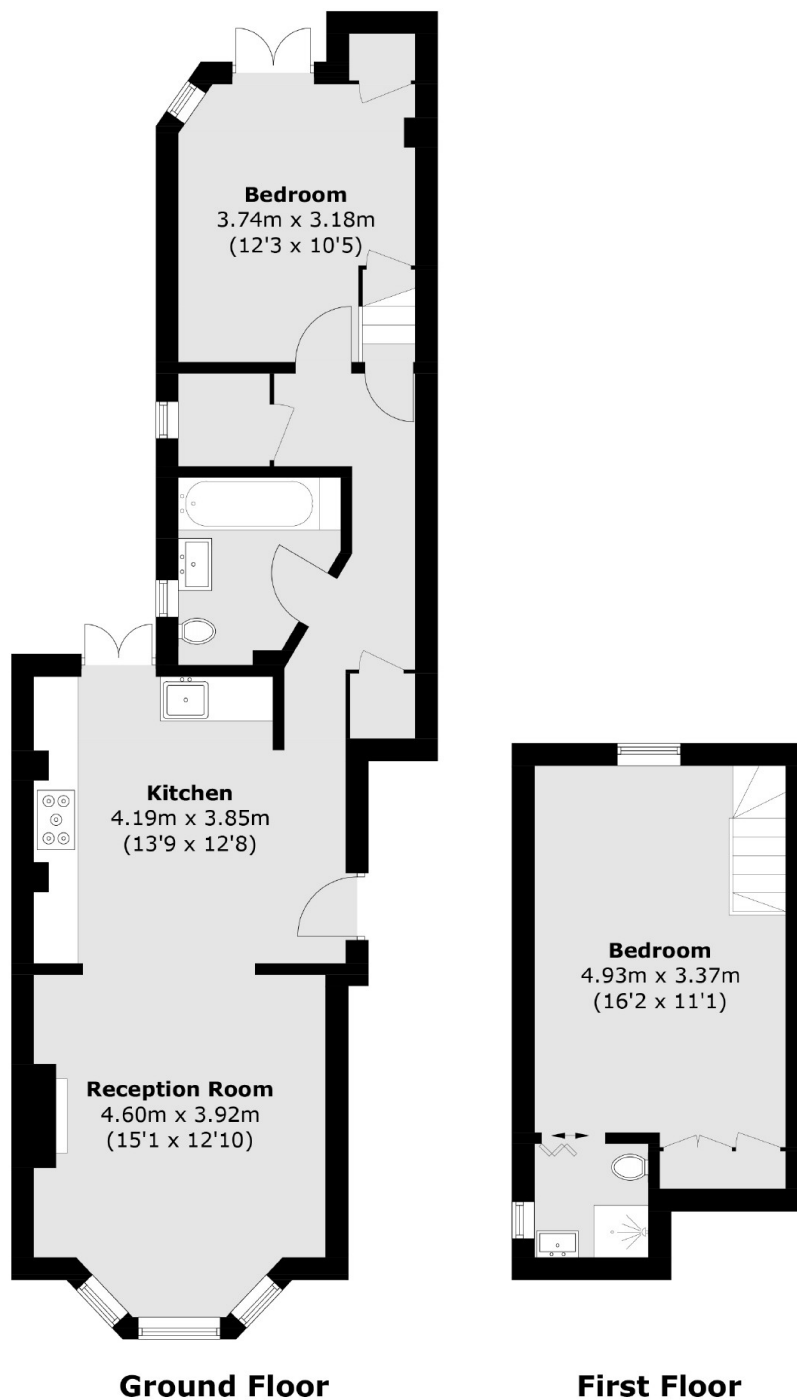
This charming two-bedroom maisonette, situated on the ground and first floors of a Victorian conversion, is immaculately presented and generously proportioned, featuring a fabulous private garden. The desirable property includes a bright reception room with a bay window, a kitchen and dining room with French doors leading to the garden, a separate utility room, and a stylish bathroom. The large principal bedroom boasts fitted wardrobes and an en suite bathroom, while the second bedroom is perfect for use as a nursery or home office.

Croxley Road is a charming residential street ideally located near Queen's Park, Maida Vale, and Notting Hill. Enjoy the green spaces of Queen's Park and Paddington Recreation Ground, as well as the tranquil Regent's Canal towpaths. Excellent transport links include Queen's Park (Bakerloo line, Overground), Westbourne Park (Hammersmith & City, Circle lines), and Paddington Station (Elizabeth line, National Rail, Heathrow Express)

Features

- Separate Utility Room
- Chain Free
- Share Of Freehold
- Private Garden
- Cast Iron Radiators
- Hard Wood Flooring

Croxley Road, Maida Vale, W9



Total area (approx.): 80.9 sq. m (870.8 sq. ft)